
Pretrial Detainees and Convicted Misdemeanors Serving Jail Time

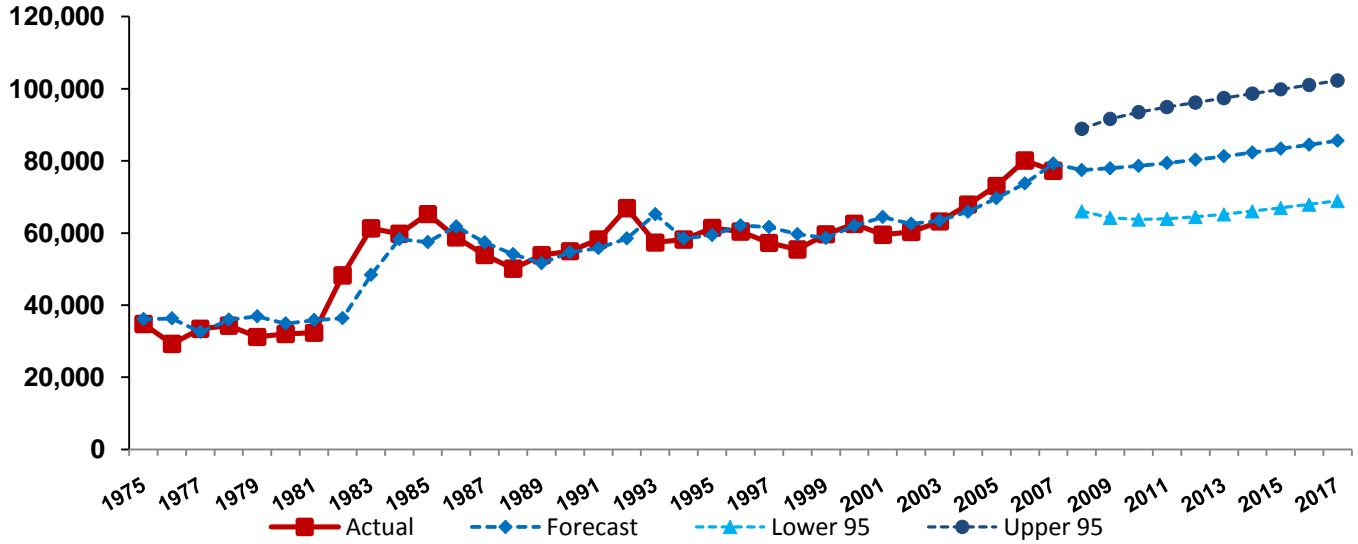
A Report for the Harris County Criminal Courts at Law



Prepared by the Office of County Court Management
August 26, 2008

Harris County Criminal Courts at Law Incoming Cases

Actual & Projected Incoming Cases: 1975-2017



Incoming Cases for Years 2000 to 2007 (Actual Year-End) – Projected for Years 2008 to 2017

| Year | Actual | Forecast | Low End of 95% Confidence Band | Upper End of 95% Confidence Band |
|------|--------|----------|--------------------------------|----------------------------------|
| 2000 | 62,489 | 62,044 | | |
| 2001 | 59,505 | 64,453 | | |
| 2002 | 60,272 | 62,569 | | |
| 2003 | 63,180 | 63,443 | | |
| 2004 | 67,870 | 65,893 | | |
| 2005 | 73,030 | 69,654 | | |
| 2006 | 80,073 | 73,760 | | |
| 2007 | 77,199 | 79,252 | | |
| 2008 | | 77,448 | 66,027 | 88,868 |
| 2009 | | 77,941 | 64,218 | 91,664 |
| 2010 | | 78,614 | 63,748 | 93,480 |
| 2011 | | 79,420 | 63,924 | 94,915 |
| 2012 | | 80,323 | 64,451 | 96,195 |
| 2013 | | 81,297 | 65,177 | 97,418 |
| 2014 | | 82,325 | 66,022 | 98,628 |
| 2015 | | 83,391 | 66,939 | 99,843 |
| 2016 | | 84,486 | 67,900 | 101,071 |
| 2017 | | 85,601 | 68,890 | 102,313 |

Observations:

- The number of Incoming Cases* is projected to increase by 10% over the next ten years.
- The projected 2007-17 forecast for Incoming Cases for the upper band at the 95% confidence level is 25%.

*Incoming Cases includes previously disposed cases that are returning to the docket (e.g. Motions to Revoke Probation); New Cases Filed excludes returning cases.

New Cases Filed and Bonds Made 2001-2008

This data shows the number and percentage of defendants with cases filed in the respective years and the status of that case in regards to making bond. Bonds include all cash, surety and personal bonds.

Cases Filed is a count of original case filings and does not include any cases returning to the docket (e.g., Motions to Revoke Probation).

Cases Filed and Bonds Made



*2008 represents YTD numbers until August 22, 2008

New Cases Filed and Bonds Made: 2001-2008

| Year | New Cases Filed | Made Bond | Percent of Cases With Bond Made | Did Not Make Bond | Percent of Cases With Bond Not Made | No Bond (RDL&WRT Cases) | No Arrest Cases |
|------|-----------------|-----------|---------------------------------|-------------------|-------------------------------------|-------------------------|-----------------|
| 2001 | 56,767 | 34,001 | 60% | 21,488 | 38% | 791 | 487 |
| 2002 | 57,074 | 33,388 | 58% | 22,380 | 39% | 714 | 592 |
| 2003 | 60,994 | 35,063 | 57% | 24,311 | 40% | 1,009 | 611 |
| 2004 | 67,561 | 36,884 | 55% | 27,426 | 41% | 2,364 | 818 |
| 2005 | 72,311 | 39,862 | 55% | 28,729 | 40% | 2,255 | 1,465 |
| 2006 | 79,253 | 43,281 | 55% | 31,748 | 40% | 1,887 | 2,337 |
| 2007 | 75,552 | 39,247 | 52% | 31,802 | 42% | 1,224 | 3,279 |

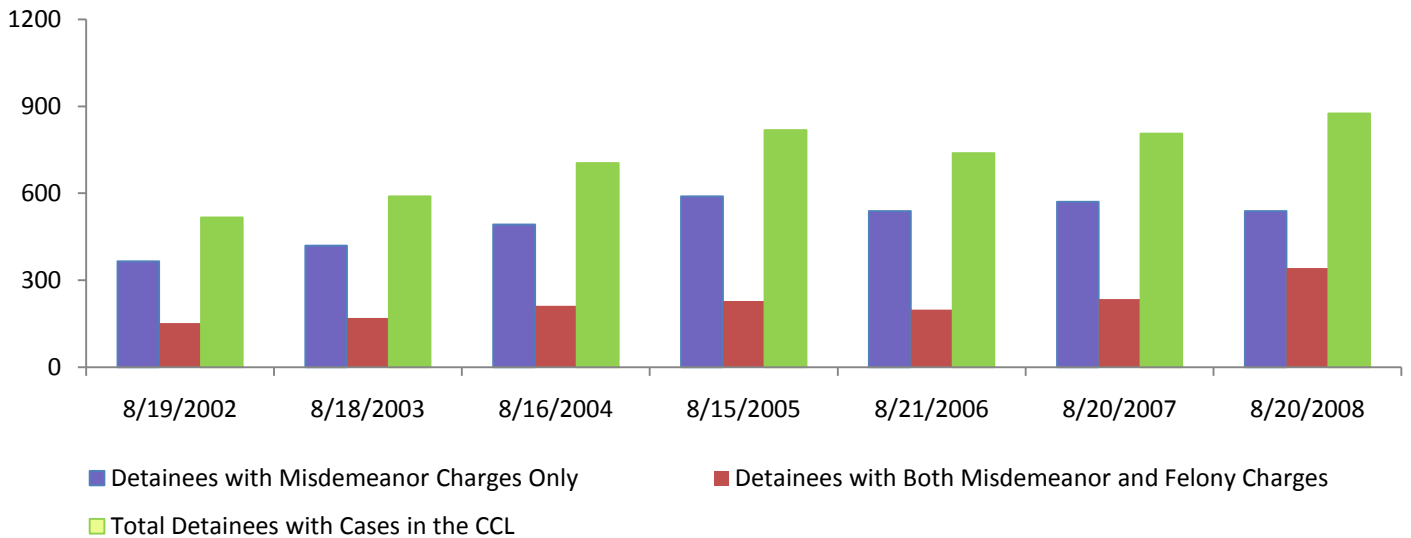
*2008 represents YTD numbers through August 22, 2008

Observations

- The ratio of New Cases Filed to Cases with Bonds Made is slowly trending downward from almost 60% of all cases bonding out in 2001 to 52% of all cases bonding out in 2008.

Pretrial Detention and Defendants with Misdemeanor Cases

Snapshot Studies: 2002-2008



Pretrial Detainees with Misdemeanor Cases

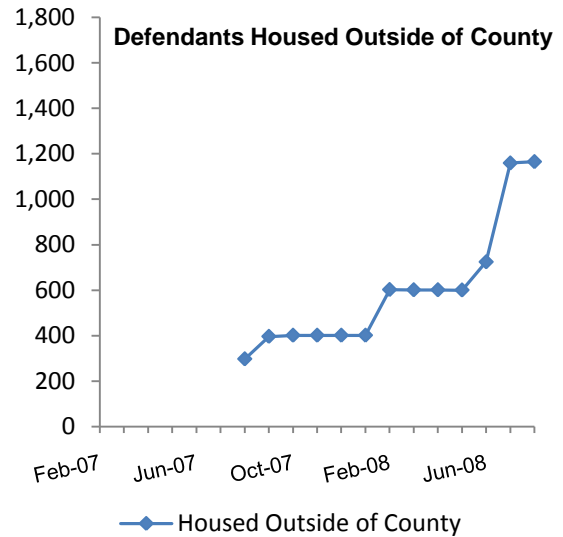
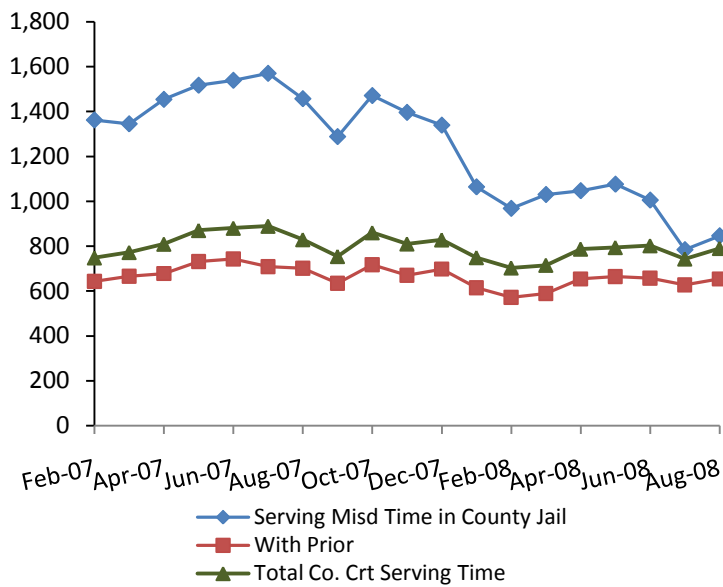
| Date | Total Cases Pending | Detainees with Misdemeanor Charges Only | % of CCL Cases Pending | Detainees with Both Misdemeanor and Felony Charges | % of CCL Cases Pending | Total Detainees with Cases in the CCL | % of CCL Cases Pending |
|-----------|---------------------|---|------------------------|--|------------------------|---------------------------------------|------------------------|
| 8/19/2002 | 6,076 | 365 | 6% | 152 | 3% | 517 | 9% |
| 8/18/2003 | 6,449 | 419 | 6% | 170 | 3% | 589 | 9% |
| 8/16/2004 | 7,402 | 492 | 7% | 212 | 3% | 704 | 10% |
| 8/15/2005 | 9,548 | 589 | 6% | 229 | 2% | 818 | 9% |
| 8/21/2006 | 9,591 | 539 | 6% | 199 | 2% | 738 | 8% |
| 8/20/2007 | 10,030 | 571 | 6% | 235 | 2% | 806 | 8% |
| 8/20/2008 | 10,380 | 539 | 5% | 342 | 3% | 875 | 8% |

Observations:

- The overall caseload of the County Criminal Courts has increased by almost 41% since 2002, but the percent of cases with defendants in pretrial detention has remained relatively constant for those defendants booked only on misdemeanors and for those defendants booked on both felony and misdemeanor charges.

Misdemeanor Convictions Serving Time

Monthly Snapshot Studies: February, 2007 – August, 2008



Profiles of Misdemeanor Convictions Serving Time

| Date (1 st Monday of each month) | | Serving Misd. Time in County Jail | With Prior | Without Priors | Total Co. Crt. Serving Time | Total Serving Time Not County Court Convictions | % Co. Crt. Serving Time With Priors | Misd/Felony Defendants Housed Out-of-County *No breakdown of Misd and Felony |
|---|--------|-----------------------------------|------------|----------------|-----------------------------|---|-------------------------------------|---|
| 2/5/2007 | Feb-07 | 1,362 | 643 | 105 | 748 | 614 | 85.96% | |
| 3/5/2007 | Mar-07 | 1,345 | 666 | 106 | 772 | 573 | 86.27% | |
| 4/2/2007 | Apr-07 | 1,454 | 678 | 131 | 809 | 645 | 83.81% | |
| 5/7/2007 | May-07 | 1,517 | 731 | 139 | 870 | 647 | 84.02% | |
| 6/4/2007 | Jun-07 | 1,539 | 743 | 137 | 880 | 659 | 84.43% | |
| 7/2/2007 | Jul-07 | 1,570 | 709 | 180 | 889 | 681 | 79.75% | |
| 8/6/2007 | Aug-07 | 1,457 | 702 | 127 | 829 | 628 | 84.68% | 298 |
| 9/4/2007 | Sep-07 | 1,288 | 635 | 119 | 754 | 534 | 84.22% | 397 |
| 10/1/2007 | Oct-07 | 1,471 | 717 | 143 | 860 | 611 | 83.37% | 402 |
| 11/5/2007 | Nov-07 | 1,396 | 670 | 140 | 810 | 586 | 82.72% | 402 |
| 12/3/2007 | Dec-07 | 1,339 | 698 | 130 | 828 | 511 | 84.30% | 402 |
| 1/7/2008 | Jan-08 | 1,064 | 615 | 134 | 749 | 315 | 82.11% | 402 |
| 2/4/2008 | Feb-08 | 968 | 572 | 131 | 703 | 265 | 81.37% | 603 |
| 3/3/2008 | Mar-08 | 1,030 | 589 | 126 | 715 | 315 | 82.38% | 602 |
| 4/7/2008 | Apr-08 | 1,047 | 654 | 133 | 787 | 260 | 83.10% | 602 |
| 5/5/2008 | May-08 | 1,076 | 665 | 129 | 794 | 282 | 83.75% | 601 |
| 6/2/2008 | Jun-08 | 1,005 | 658 | 144 | 802 | 203 | 82.04% | 725 |
| 7/7/2008 | Jul-08 | 784 | 628 | 115 | 743 | 41 | 84.52% | 1160 |
| 8/4/2008 | Aug-08 | 846 | 654 | 136 | 790 | 56 | 82.78% | 1166 |

Misdemeanor Convictions Serving Time

Monthly Snapshot Studies: February 5, 2007 – August, 2008

Observations

- Harris County began housing prisoners in out-of-County facilities in July, 2007.
- The number of prisoners housed in non-County facilities has increased from 62 on July 13, 2007 to 1,166 on August 4, 2008.
- There has been no significant increase in the number of misdemeanor convictions serving time over the last year, nor has there been any significant increase in the number of misdemeanor convictions serving time coming out of the County Criminal Courts at Law.
- More than 80% of the misdemeanor convictions serving time have prior criminal convictions.