

Performance Based Criminal Case Processing

NACM Annual Conference

Anaheim, CA

July 15, 2008

Presented by Bob Wessels

WWW.CCL.HCTX.NET

Information for: [Defendants](#) | [for Plaintiffs](#) | [for Attorneys](#) | [for Jurors](#) | [for Crime Victims](#) | [for Educators](#)



Harris County Criminal Courts at Law

Harris County Civil Courts at Law

Harris County Probate Courts

Office of Court Management

Related Websites

- [Harris County Justice Courts](#)
- [Houston Municipal Courts](#)
- [State District Courts of Harris County](#)
- [Harris County District Clerk's Office](#)
- [Harris County Pretrial Services](#)
- [Harris County District Attorney](#)
- [Community Supervision & Corrections](#)
- [Harris County Homepage](#)



Criminal Courts at Law **Civil Courts at Law** **Probate Courts**

<p>Judge Reagan Helm, Court 1 Judge Bill Harmon, Court 2 Judge Donald Jackson, Court 3 Judge James Anderson, Court 4 Judge Margaret Harris, Court 5 Judge Larry Standley, Court 6 Judge Pam Derbyshire, Court 7 Judge Jay Karahan, Court 8</p>	<p>Judge Analia Wilkerson, Court 9 Judge Sherman Ross, Court 10 Judge Diane Bull, Court 11 Judge Robin Brown, Court 12 Judge Mark Atkinson, Court 13 Judge Mike Fields, Court 14 Judge Jean Spradling Hughes, Court 15</p>	<p>Judge R. Jack Cagle, Court 1 Judge Jacqueline Lucci Smith, Court 2 Judge Linda Storey, Court 3 Judge Roberta A. Lloyd, Court 4</p>	<p>Judge Russell Austin, Court 1 Judge Mike Wood, Court 2 Judge Rory R. Olsen, Court 3 Judge William C. McCulloch, Court 4</p>
---	--	--	---



Harris County Criminal Courts at Law

Search Harris County

Information for: [Defendants](#) | [for Plaintiffs](#) | [for Attorneys](#) | [for Jurors](#) | [for Crime Victims](#) | [for Educators](#)



1201 Franklin • Houston, Texas 77002

[Introduction to the County Criminal Courts](#)

[Venue and Jurisdiction](#)

[Case Records Online](#)

[Examining the Work of Your Courts](#)

[Office of Court Management](#)

Court Directory

- Judge Reagan Helm, Court 1
- Judge Bill Harmon, Court 2
- Judge Donald Jackson, Court 3
- Judge James Anderson, Court 4
- Judge Margaret Harris, Court 5
- Judge Larry Standley, Court 6
- Judge Pam Derbyshire, Court 7
- Judge Jay Karahan, Court 8
- Judge Analia Wilkerson, Court 9
- Judge Sherman Ross, Court 10
- Judge Diane Bull, Court 11
- Judge Robin Brown, Court 12
- Judge Mark Atkinson, Court 13
- Judge Mike Fields, Court 14
- Judge Jean Hughes, Court 15

[Harris County Courts Homepage](#)

[Harris County Homepage](#)


Examining the Work of Your Courts - Microsoft Internet Explorer

File Edit View Favorites Tools Help

Back Forward Stop Refresh Home Search Favorites RSS Print Mail News Groups Feeds

Address http://www.cd.hctx.net/criminal/examine/default-2.htm Go Links

Google Go Bookmarks 50 blocked Check AutoLink AutoFill Send to Settings

 **Harris County Courts**
Examining the Work of Your Courts

Search Harris County Search

Information for: [Defendants](#) | [for Plaintiffs](#) | [for Attorneys](#) | [for Jurors](#) | [for Crime Victims](#) | [for Educators](#)

Case Records Online
County Criminal Courts
County Civil Courts
County Probate Courts
Justice of the Peace Courts

Harris County Courts
County Criminal Courts at Law
County Civil Courts at Law
County Probate Courts at Law
Justice of the Peace Courts
State District Courts of Harris County
Houston Municipal Courts

Related Websites
Harris County Clerks Office
Harris County District Clerk's Office
Harris County Pretrial Services
Harris County District Attorney
Harris County Constables
Harris County Sheriff's Department
Harris County Juvenile Probation
Community Supervision & Corrections

Harris County Homepage

Caseload Statistics
Caseload Trends for the Criminal Courts
Disposed Cases by Offense Category for the Criminal Courts

Performance Measures
Clearance Rate for the Criminal Courts
Time to Disposition for the Criminal Courts
Age of Caseload for the Criminal Courts
Cases Set for Jury Trials

Note: The reports for caseload statistics and performance measures are updated monthly.

Research Studies
DWI Recidivism Studies for the Criminal Courts
Cases Filed in 2001
Cases Filed in 2002
Cases Filed in 2003
Cases Filed in 2004

Pretrial Detention Study for the Criminal Courts

Related Presentations
Performance-Based Criminal Case Processing
Technical Introduction to the Harris County Court Data Warehouse

Information Resources for Courts
Texas Courts Online
Texas Courts Online -- Judicial Information Program
National Center for State Courts (NCSC)
NCSC Court Statistics Project
NCSC CourTools Project
National Association for Court Management
Conference of State Court Administrators
Dept. of Justice -- Bureau of Justice Statistics
Office of Justice Programs
Forum on the Advancement of Court Technology (FACT)
The National Consortium for Justice Information and Statistics (SEARCH)



Axioms of Caseflow Management

- Early and continuous control reduces backlog
- Every case on the docket for a day and purpose certain
- Immediacy of trial disposes of cases
- A court with time available will dispose of more cases than will a court continuously in trial
- What people count influences human behavior

- What people count influences human behavior
- For it to affect human behavior, it has to be measured, compared and shared

- You can't manage a caseload until you can manage an individual case
- Achieving higher levels of performance begins with understanding and measuring your performance today
- Higher performance is achieved by creating a culture that embraces analytics

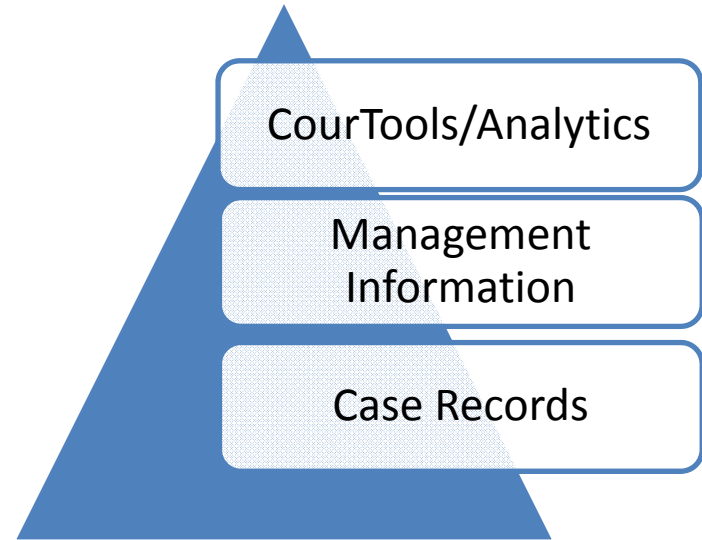
Analytics

- “the extensive use of data, statistical analysis and quantitative analysis, explanatory and predictive models and fact – based management to drive decisions and actions”

Davenport and Harris
Competing on Analytics
Harvard Business School Press, 2007

The Drive Toward Analytics

- Budgets
- Jail Population
- Reduce Delay
- Conservation of Time
- The Media
- Public Perceptions
- *CourTools*



CourTools – The 10 Core Measures

CourTools

Trial Court Performance Measures

National Center for State Courts

The 10 Core Measures

Access and Fairness **1**

definition: Ratings of court users on the court's accessibility and its treatment of customers in terms of fairness, quality, and respect.

purpose: Many assume that "winning" or "losing" is what matters most to citizens when dealing with the courts. However, research consistently shows that positive perceptions of court experience are shaped more by court users' perceptions of how they are treated in court, and whether the court's process of making decisions seems fair. This measure provides a tool for surveying all court users about their experience in the courthouse. Comparison of results by location, division, type of customer, and across courts can inform court management practices.

Clearance Rates **2**

definition: The number of outgoing cases as a percentage of the number of incoming cases.

purpose: Clearance rate measures whether the court is keeping up with its incoming caseload. If cases are not disposed of in a timely manner, a backlog of cases awaiting disposition will grow. This performance measure is a single number that can be compared within the court for any and all case types, on a monthly or yearly basis, or between one court and another. Knowledge of clearance rates by case type can help a court pinpoint emerging problems and indicate where improvements can be made.

Time to Disposition **3**

definition: The percentage of cases disposed or otherwise resolved within established time frames.

purpose: This measure, used in conjunction with Clearance Rates (Measure 2) and Age of Active Pending Caseload (Measure 4), is a fundamental management tool that assesses the length of time it takes a court to process cases. It compares a court's performance with local, state, or national guidelines for timely case processing.

Age of Active Pending Caseload **4**

definition: The age of the active cases pending before the court, measured as the number of days from filing until the time of measurement.

purpose: Knowing the age of the active cases pending before the court is most useful for addressing three related questions: Does a backlog exist? Which cases are a problem? Given past and present performance, what is expected in the future?

Trial Date Certainty **5**

definition: The number of times cases disposed by trial are scheduled for trial.

purpose: A court's ability to hold trials on the first date they are scheduled to be heard (trial date certainty) is closely associated with timely case disposition. This measure provides a tool to evaluate the effectiveness of calendaring and continuance practices. For this measure, "trials" includes jury trials, bench trials (also known as nonjury trials), and adjudicatory hearings in juvenile cases.

Reliability and Integrity of Case Files **6**

definition: The percentage of files that can be retrieved within established time standards, and that meet established standards for completeness and accuracy of contents.

purpose: A reliable and accurate case file system is fundamental to the effectiveness of day-to-day court operations and fairness of judicial decisions. The maintenance of case records directly affects the timeliness and integrity of case processing. This measure provides information regarding (a) how long it takes to locate a file, (b) whether the file's contents and case summary information match up, and (c) the organization and completeness of the file.

Collection of Monetary Penalties **7**

definition: Payments collected and distributed within established timelines, expressed as a percentage of total monetary penalties ordered in specific cases.

purpose: Integrity and public trust in the dispute resolution process depends in part on how well court orders are observed and enforced in cases of noncompliance. In particular, restitution for crime victims and accountability for enforcement of monetary penalties imposed on criminals are issues of intense public interest and concern. The focus of this measure is on the extent to which a court takes responsibility for the enforcement of orders requiring payment of monetary penalties.

Effective Use of Jurors **8**

definition: Juror yield is the number of citizens selected for jury duty who are qualified and report to serve, expressed as a percentage of the total number of prospective jurors available. Juror utilization is the rate at which prospective jurors are used at least once in trial or voir dire.

purpose: The percentage of citizens available to serve relates to the integrity of source lists, the effectiveness of jury management practices, the willingness of citizens to serve, the efficacy of excuse and postponement policies, and the number of exemptions allowed. The objective of this measure is to minimize the number of unused prospective jurors—the number of citizens who are summoned, qualified, report for jury service, and who are not needed.

Court Employee Satisfaction **9**

definition: Ratings of court employees assessing the quality of the work environment and relations between staff and management.

purpose: Committed and loyal employees have a direct impact on a court's performance. This measure is a powerful tool for surveying employee opinion on whether staff have the materials, motivation, direction, sense of mission, and commitment to do quality work. Knowing how employees perceive the workplace is essential to facilitate organizational development and change, assess teamwork and management style, enhance job satisfaction, and thus improve service to the public.

Cost Per Case **10**

definition: The average cost of processing a single case, by case type.

purpose: Monitoring cost per case, from year to year, provides a practical means to evaluate existing case processing practices and to improve court operations. Cost per case forges a direct connection between how much is spent and what is accomplished. This measure can be used to assess return on investment in new technologies, reengineering of business practices, staff training, or the adoption of "best practices."



CourTools

National Center for State Courts
300 Newport Avenue
Williamsburg, Virginia 23185
800-466-3003

Copyright © 2005
copies and updates at
www.ncsconline.org/ij_research



CourTools

Developed by the NCSC Court
Performance Community of Practice

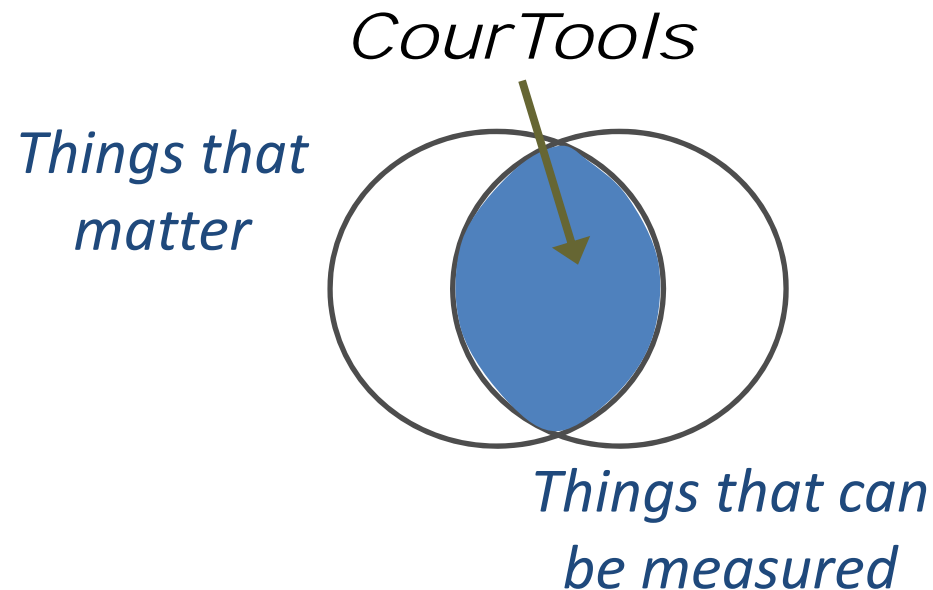
Project Directors: Brian J. Ostrom and Donald J. Hull
Series Editor: Richard Y. Schaeffer
Information Design: Neal B. Knudsen
Design and Layout: Graphics 3



Performance Management

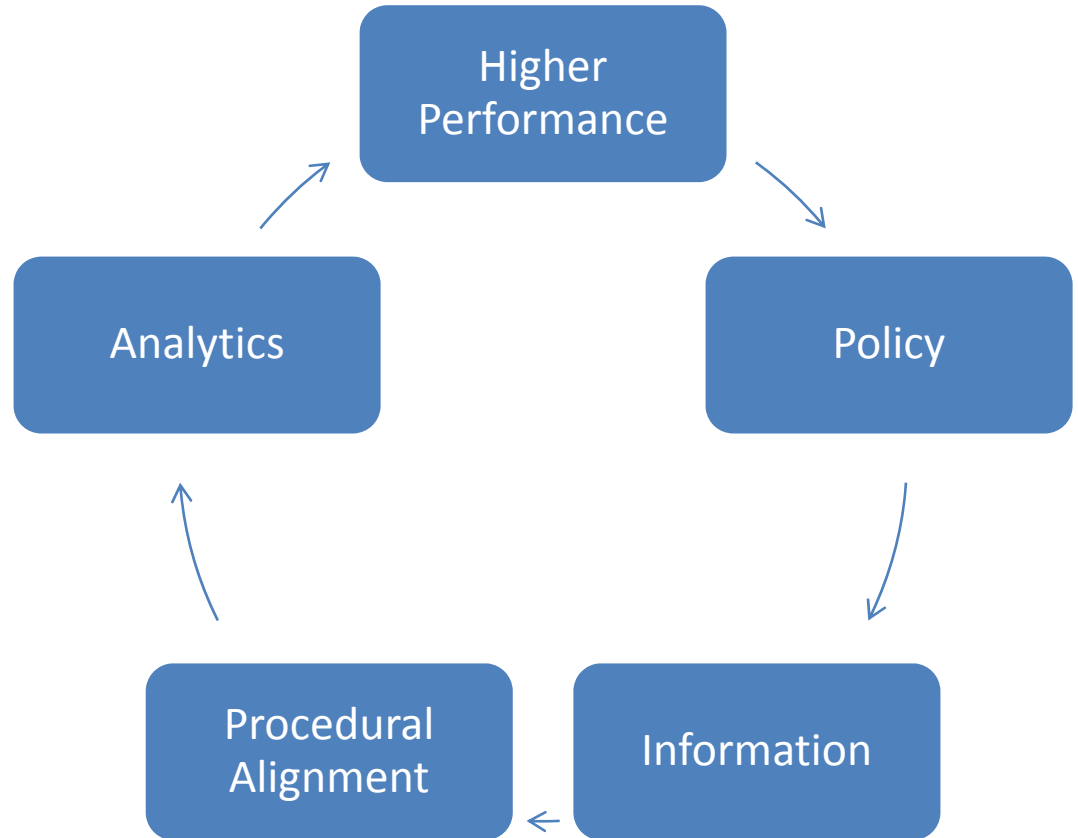
What are the criteria for a good set of performance indicators?

- Linked to Key Principles
- Balanced
- Measurable
- Sustainable
- Feasible & Few
- Focused on Outcomes

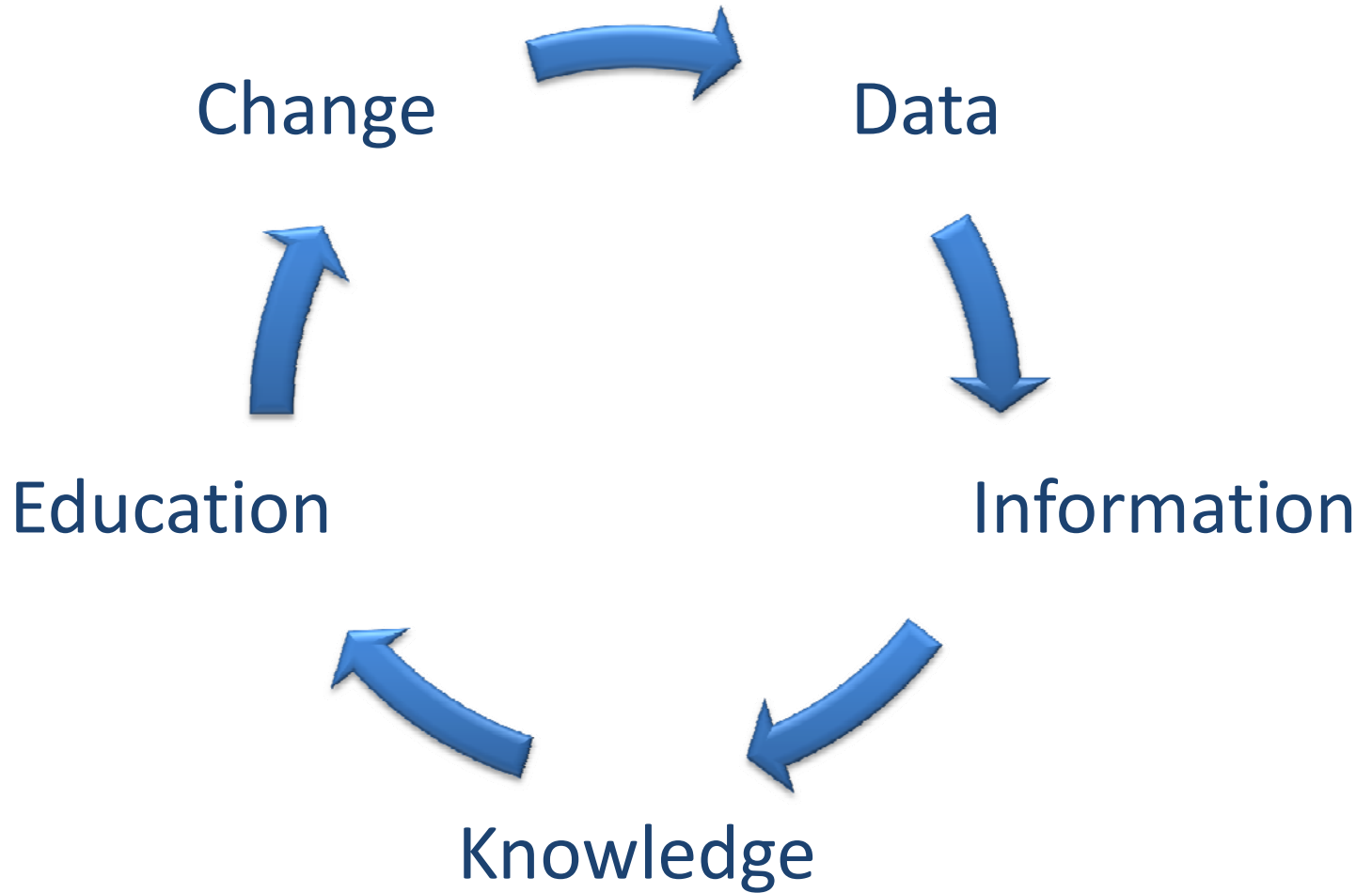


Alignment

- Policy
- Information
- Procedural Alignment
- Analytics



Change



Reporting by Individual Judge/Court

- Necessary for comparison and benchmarking
- Focus training and education – Coaching vs. Catching
- Policy: development, comparison, evaluation over time
- Development of Key Performance Indicators (KPIs)
- You need to know before you read about “it” elsewhere
- Nothing is “unknown” anymore – public information requests and routine data acquisition

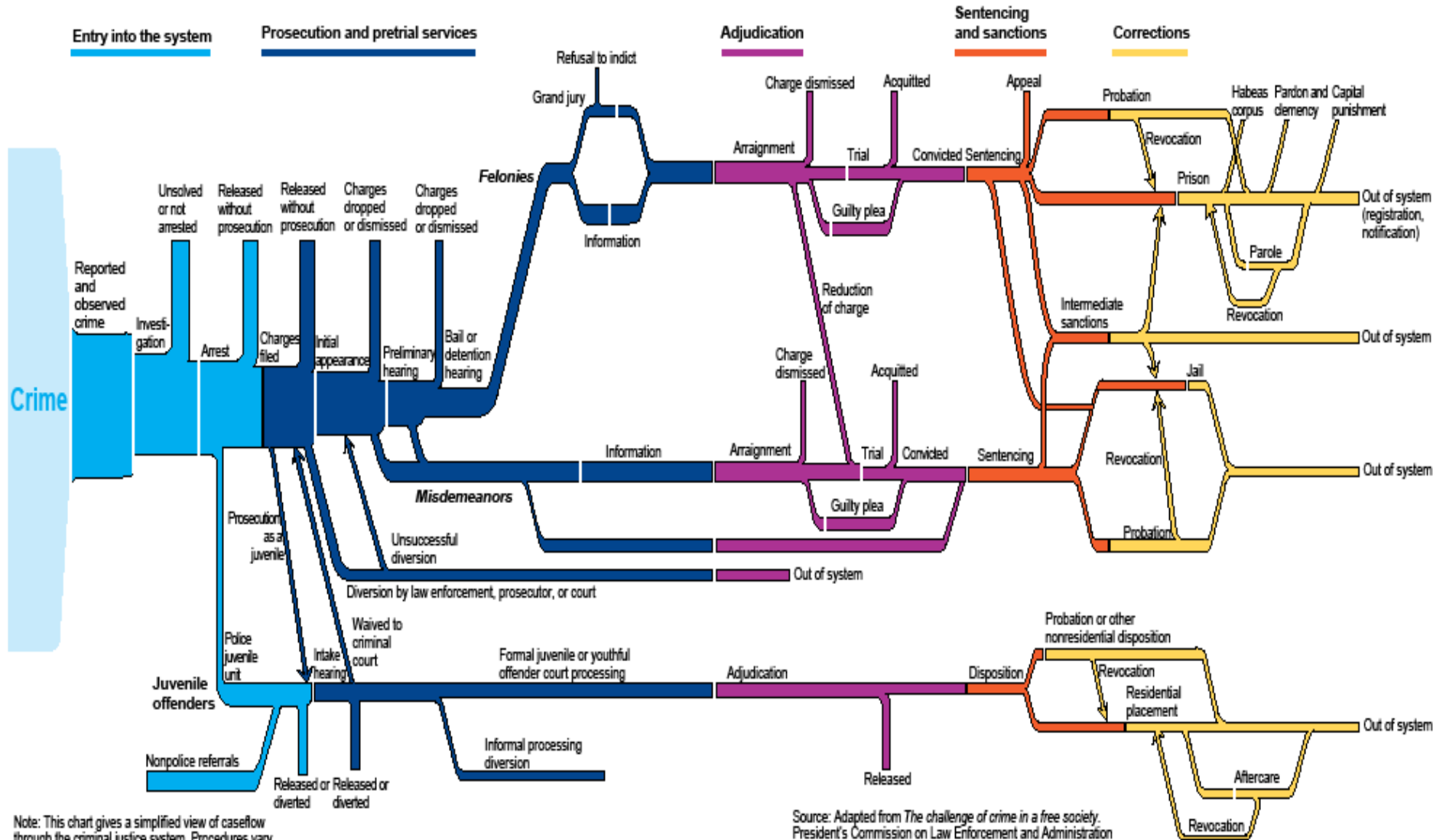
County Criminal Courts - Snapshot

- Pending Caseload (~10,000 cases)
- Filings & Dispositions (~6,000 cases/month)
- Time to Disposition (90% in 90 days or less)
- Age of Caseload (90% ≤ 90 days old)
- Number of Appearances (3 settings to disposition)
- % Incarcerated Pre Trial (6% misdemeanor charges only)

County Criminal Courts - Snapshot

- Number of Cases Set for Trial (+200/month)
- Fines and Fees Assessed (~\$20 million/year)
- Collections Rate (85%)
- Cost of Indigent Defense (\$2.7 million/year)
- DWI Recidivism Rate For First Offenders (17% @ 4 years from disposition)

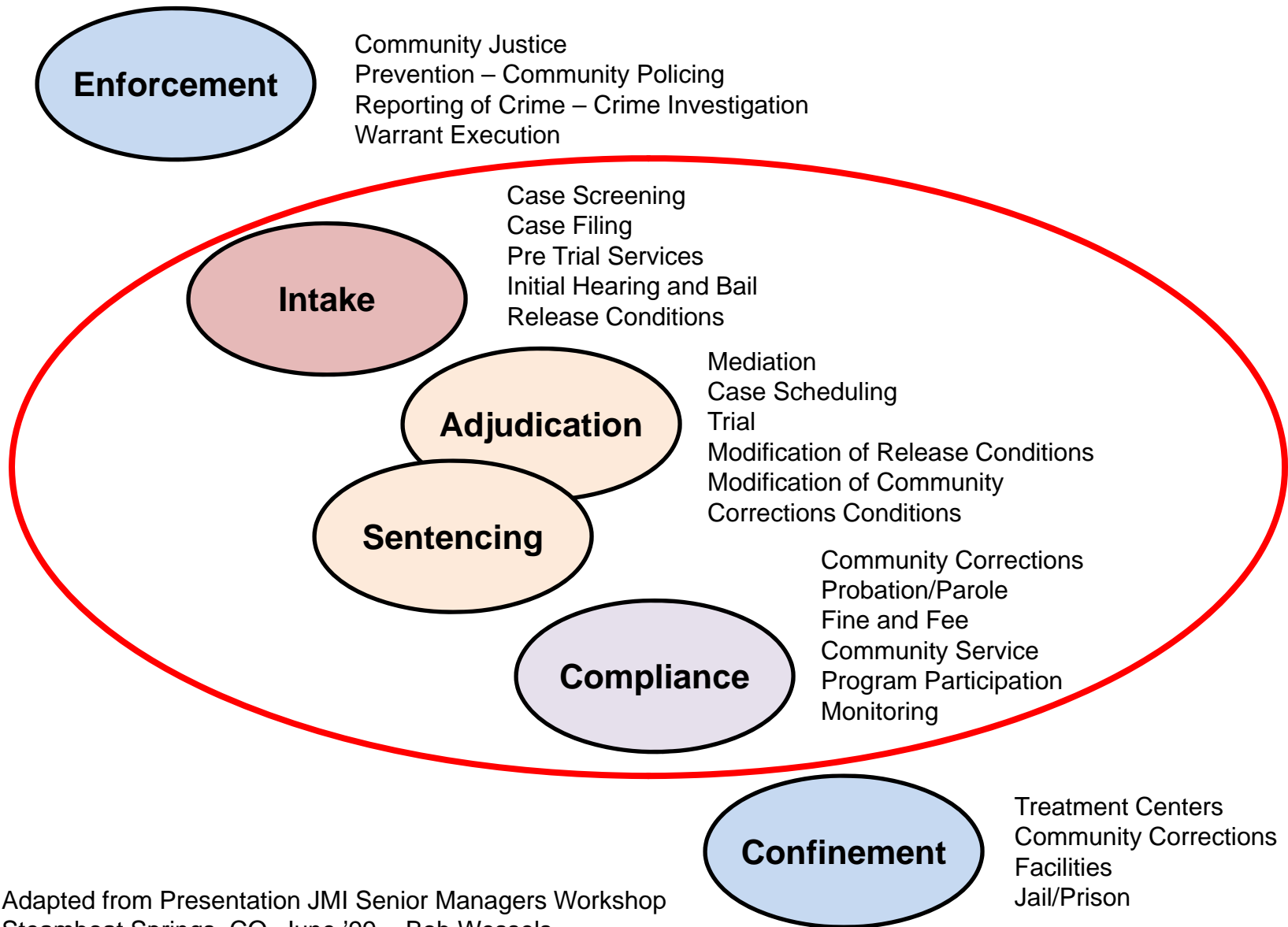
What is the sequence of events in the criminal justice system?



Note: This chart gives a simplified view of caseload through the criminal justice system. Procedures vary among jurisdictions. The weights of the lines are not intended to show actual size of caseloads.

Source: Adapted from *The challenge of crime in a free society*. President's Commission on Law Enforcement and Administration of Justice, 1967. This revision, a result of the Symposium on the 30th Anniversary of the President's Commission, was prepared by the Bureau of Justice Statistics in 1997.

Integrated Justice Systems Model – 2000



Adapted from Presentation JMI Senior Managers Workshop
Steamboat Springs, CO. June '99 - Bob Wessels

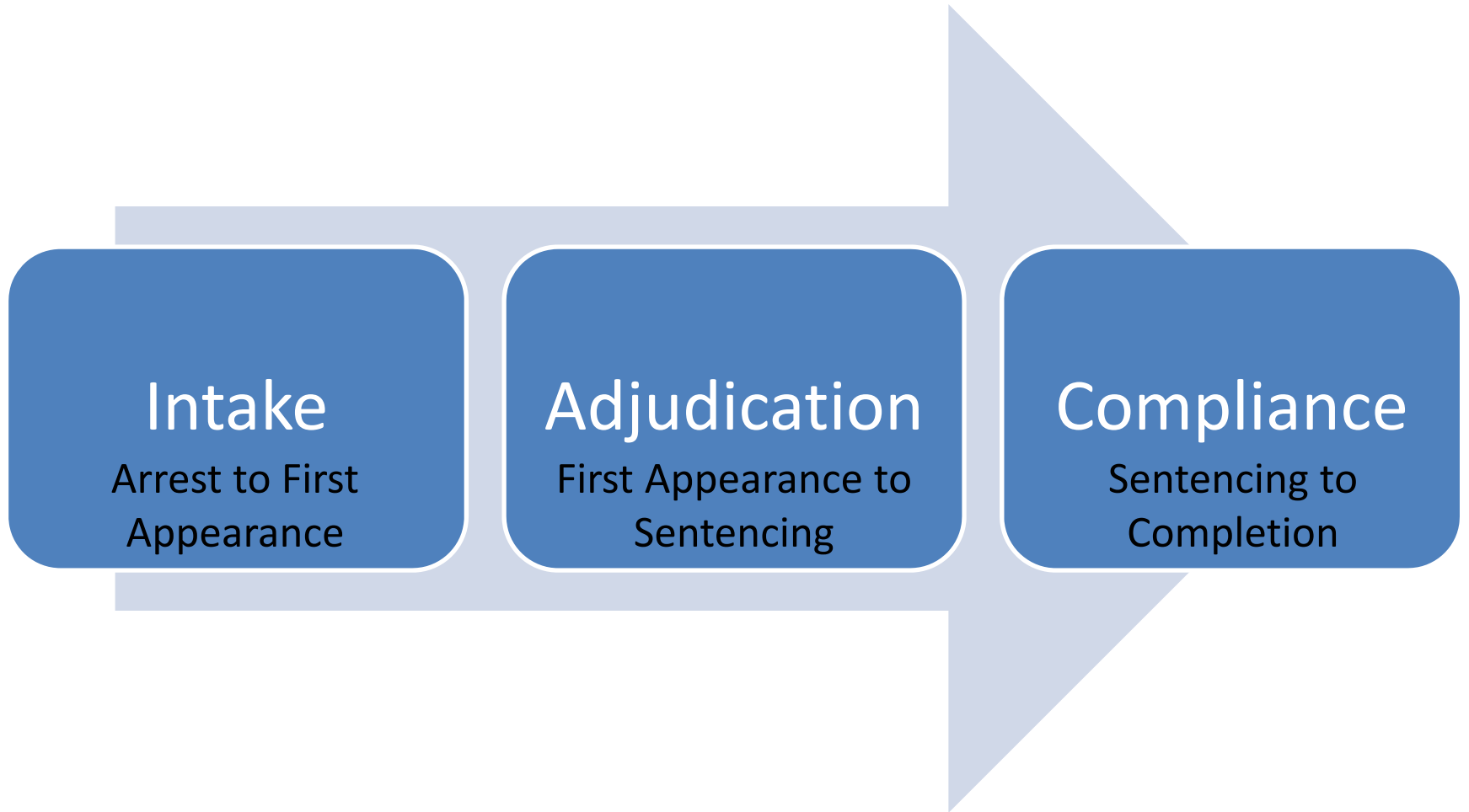
What do we manage?

- Cases/Events/Settings
- Jail Population/Incarcerated Defendants
- Bonding, Pre Trial Services
- Person Status and Offenders with Special Needs
- Attorney Performance and Fees

What do we manage?

- Non Arrest Cases/Open Warrants
- Collections and Capias Pro Fines
- Community Supervision and Compliance with Conditions
- Special Caseloads

View of System in 3 Parts





Intake Components

Adjudication

Compliance

- 24/7 operation
- Arrest - Offender screened through AFIS
- Officer enters case in DIMS
- Asst. D.A. screens case
- PTSA conducts and verifies Defendant Interview
- D.A. files or rejects case



Intake Components

Adjudication

Compliance

- Clerk receives case from D.A.
 - Assigns to court randomly
 - Performs case research for pending case, active probation, DWI within last 5 years – if so transfers to appropriate court
 - Assigns 7 day setting
 - Enters bond amount from initial bail schedule
 - Files case



Intake Components

Adjudication

Compliance

- Defendant appears at Probable Cause Hearing unless released (12 – 18 hours from arrest)
 - Warning
 - Bail Review – PTSA recommendations Received
 - Consulate notification
 - Request counsel appointment
 - If appearance is \geq 24 hours, released on PR Bond
 - If not released, added to next day's court docket automatically (24 – 36 hours from arrest)




Intake

Adjudication

Compliance

Docket/Calendar Information for Each Case and Person

- Style
- Filing Date
- Offense
- Bond Amount
- _____ Days Old
- Number of Settings
- R/S Requested by _____
- Felony Pending/Court/Setting Date
- Race/Sex/DOB
- Pre Trial Interview Y/N
- Defense Attorney Name & Phone #
- Mental Health Flag
- Bonding Co. & Phone #
- Days in Jail – This Case
- Days in Jail – Total

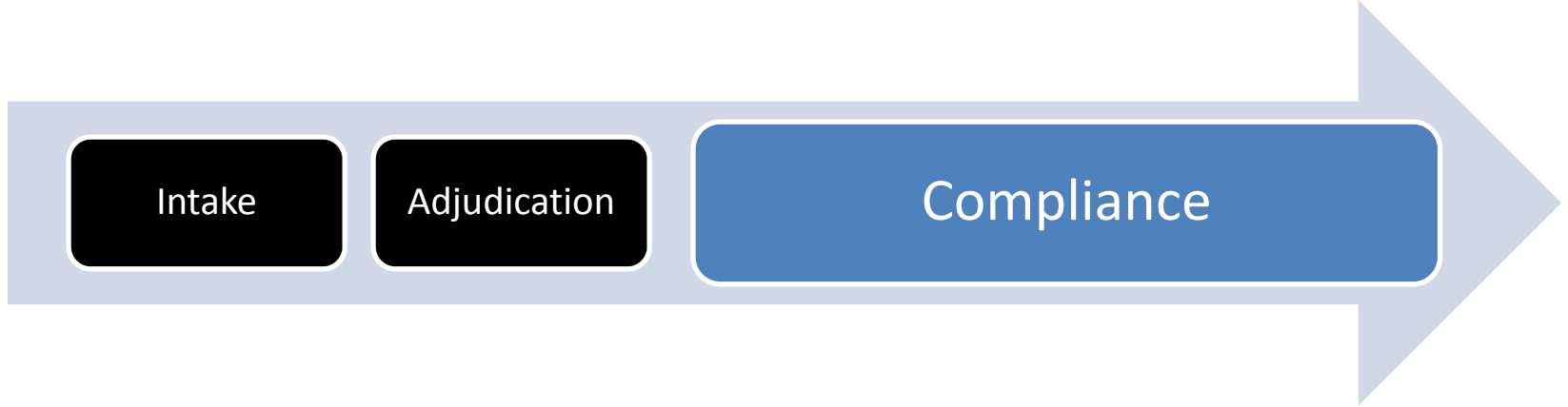


Intake

Adjudication

Compliance

- Conditions of Release
- Jail – Days/Credit
- Fine -Dollars/Payment Plan/Community Service/Days
- Probation Conditions
- Driving Restrictions
- Treatment Programs



- Intermediate Sanctions
- “Evidence Based Practices”
- Defined Responses to Non Compliance
- Assessment of Treatment Programs and Providers
- Service of Arrest Warrants

Evolution of Court Management Information

1976

- JIMS
- Lists
- Forms
- Mgt. Reports
- Events & Jail Status

1986

- PCs
- Graphics

1990

- PCs in courts
- “Deliver & Navigate”

1995

- Data extracts
- Analysis

2007

- ***Court Business Intelligence***
- Automated on-demand reporting

Lists & Management Reports

	1	2	3	4	5	6	7	8	9
<u>Number of:</u>									
(1) Cases Set (JIMS 147)	500	601	299	568	815	652	726	535	676
(2) CASES SET TRIAL (3/9 JIMS 081)	40	65	212	97	185	184	252	128	254
(3) Cases Disp: Filed Current Yr. (JIMS 183)	201	202	289	210	144	208	189	199	177
Filed Previous Yr.	464	458	380	450	441	602	444	366	432
(4) CASES SET OUTSIDE SPEEDY TRIAL LIMITS (JIMS 184 3/8)	59	81	20	59	182	96	124	64	137
w/ck	369	394	379	385	376	363	385	355	367
(5) N/A Cases: (JIMS 147)	742	951	1,320	1,248	507	966	723	296	322
other									
(6) N/A CASES FILED PRIOR 12-31-74 (JIMS 079) (CASE #411371 AS CONTROL)	253	353	753	730	57	329	188	0	0
(7) Settings: Feb. '78 (JIMS 168)									
0-1	54	38	98	55	45	52	53	49	42
2-3	81	97	129	108	84	115	108	110	94
4-5	67	66	6	51	56	88	53	50	53
6-7	19	14	0	15	16	35	4	9	16
8-9	4	6	0	5	2	6	3	1	3
9+	4	1	0	2	1	4	3	0	1
(8) <u>Average Time to:</u> (JIMS 168) Last Quarter 1977 to Feb. '78 From-Cases Without Felony Pending									
From 1st setting <u>PLEA</u>	47 - 43	51 - 50	8 - 9	45 - 41	56 - 67	47 - 61	55 - 59	32 - 35	53 - 45
<u>TRIAL</u>	68 - 73	111 - 45	5 - 18	118 - 118	155 - 253	114 - 185	207 - 236	106 - 61	147 - 223
From Arrest <u>COMPLETE</u>	64 - 60	69 - 68	43 - 37	64 - 60	72 - 90	69 - 78	75 - 74	49 - 55	74 - 62

Prepared 3/9/78

Forms

Reset Form

CAUSE NO. _____

THE STATE OF TEXAS
V.



IN THE COUNTY CRIMINAL
COURT AT LAW NO. _____
HARRIS COUNTY, TEXAS

Defendant Name _____

Charge: _____

Case Reset Form

Requested By: Defense State Court

Reset Date: The undersigned Defendant and Counsel acknowledge that this case is reset from _____

to: _____ at _____

- The State has offered:
- The State and Defense agree as follows:

Attorney For State Signature _____

Defendant Signature On Bond In Jail

Fines, Court Costs, and Restitution
 Fine: _____
 Costs: _____
 Total: _____
 Restitution: _____

Attorney for the Defendant (print) Retained Appointed
 Attorney Bar # _____ Attorney SPN _____
 Attorney Signature _____
 Attorney Email Address _____
 Attorney Telephone No.: _____
 Attorney Fax No.: _____

FOR COURT STAFF USE ONLY

- Setting Reason:
- ARRG CTRL / JTRL DISM DISP HEAR
 - MAJH / MRPH MCHR MOTN / PTMO NTRL PLEA
 - PTCR SFBF SFJS Other: _____

- Reason for Reset:
- Attorney Not Present Compliance MAJ / MRP DA: Evaluate Case D.A. File Unavailable
 - D.A. Chief Unavailable DA: Re-File As Felony Defendant Has New Case Defendant On Call
 - Felony Pending Finish Program No Clearance Letter No Evaluation
 - No Offense Report No Tape (Audio - Video) Pretrial Conference Restitution
 - RIP Time To Hire Attorney Send / Return FCLD File Other: _____

Setting Date Approved By: _____

Date Signed _____

Judge / Coordinator

Age of Case (JIMS 184)

JIMS REPORT NO. 184

JUSTICE INFORMATION AND MANAGEMENT SYSTEM

PAGE NO. 1

RUN DATE - 07/02/08

AGE OF CASE REPORT

COUNTY CRIMINAL COURT AT LAW 001

```
*****
DEFENDANT          CASE      OFFENSE          INS  OFF DATE  DATE  NO  SET  BOND  JAIL  DAYS
NAME              NUMBER    DST  LITERAL        TYPE CLS FILED  SET  SET REA  DATE  DATE  OLD
*****
FRANCISCO, JAVIER  132139301010  J    ASSAULT-FAMILY MEMBER      MIN  A  081205  080508  09  FELP                112707  01055
COOK, JEFFERY MARTIN  139945701010  J    FAIL TO ID TO P.O. FALSE INF/F MIN  A  082906  071108  08  FELP  083006  083006  00673
COOK, JEFFREY      140032901010  J    TRESPASS PROP/BLDG-NO DEPART  MIN  B  090206  071108  07  FELP  090406  090206  00669
*****
```


Master Event Log (JIMS 168)

JIMS REPORT NO. 168
07/01/08

HARRIS COUNTY
JUSTICE INFORMATION AND MANAGEMENT SYSTEM
COUNTY CRIMINAL COURT AT LAW NUMBER 1
CASES WITH DEF OUT ON BOND

PAGE 41

CASE NUMBER	(A) DATE OF COMPLAINT	(B) DATE OF FILING	(C) DATE OF ARREST	(D) DATE OF 1ST SETG	(E) DATE OF PLEA	(F) DATE OF RESULT	(G) DATE OF TRIAL	(H) DATE OF RES PEN RST DISM	(I) DATE OF COMPLETE BOND
DEFENDANT'S NAME	DAYS BETWEEN EVENTS (A-B)		(C-D)	(D-E)	(E-F)	(F-G)	(G-H)	(H-I)	(I)
*****PERIOD FROM 04/01/08 TO 06/30/08*****									
AVERAGE DAYS	0		6	75	261	110	110	19	
STANDARD DEVIATION	0.00		2.50	84.88	107.01	0.00	141.90	107.89	
NUMBER	345		360	108	5	1	361	385	
INVALID DATA	40		25	277	380	384	24	0	

EVENTS	C TO D			D TO E			D TO F			D TO G			C TO H			B TO I		
DAYS	FREQ	CUML	PCT	FREQ	CUML	PCT	FREQ	CUML	PCT	FREQ	CUML	PCT	FREQ	CUML	PCT	FREQ	CUML	PCT
000-006	169	169	46.90	11	11	10.10	0	0	0	0	0	0	8	8	2.20	351	351	91.10
007-013	191	360	53.00	2	13	1.80	0	0	0	0	0	0	34	42	9.40	9	360	2.30
014-020	0	360		3	16	2.70	0	0	0	0	0	0	1	43	.20	4	364	1.00
021-027	0	360		5	21	4.60	0	0	0	0	0	0	9	52	2.40	3	367	.70
028-034	0	360		6	27	5.50	0	0	0	0	0	0	19	71	5.20	0	367	
035-041	0	360		8	35	7.40	0	0	0	0	0	0	20	91	5.50	0	367	
042-048	0	360		3	38	2.70	0	0	0	0	0	0	20	111	5.50	1	368	.20
049-055	0	360		13	51	12.00	0	0	0	0	0	0	16	127	4.40	1	369	.20
056-062	0	360		13	64	12.00	0	0	0	0	0	0	35	162	9.60	0	369	
063-069	0	360		5	69	4.60	0	0	0	0	0	0	22	184	6.00	1	370	.20
070-076	0	360		6	75	5.50	0	0	0	0	0	0	19	203	5.20	0	370	
077-083	0	360		5	80	4.60	0	0	0	0	0	0	18	221	4.90	0	370	
084-090	0	360		3	83	2.70	0	0	0	0	0	0	15	236	4.10	0	370	
091-097	0	360		3	86	2.70	0	0	0	0	0	0	17	253	4.70	0	370	
098-104	0	360		0	86	0	0	0	0	0	0	0	20	273	5.50	0	370	
105-111	0	360		3	89	2.70	0	0	1	1	100.00	5	278	1.30	1	371	.20	
112-118	0	360		6	95	5.50	0	0	0	1	5	283	1.30	1	372	.20		
119-125	0	360		0	95	0	0	0	0	1	11	294	3.00	0	372			
126-132	0	360		0	95	0	0	0	0	1	2	296	.50	0	372			
133-139	0	360		2	97	1.80	0	0	0	1	4	300	1.10	0	372			
140-146	0	360		0	97	0	0	0	0	1	3	303	.80	0	372			
147-153	0	360		1	98	.90	0	0	0	1	3	306	.80	0	372			
154-160	0	360		2	100	1.80	0	0	0	1	2	308	.50	0	372			
161-167	0	360		0	100	0	0	0	0	1	6	314	1.60	0	372			
168-174	0	360		0	100	1	1	20.00	0	1	2	316	.50	0	372			
OVR 174	0	360		8	108	7.40	4	5	80.00	0	1	45	361	12.40	13	385	3.30	

AVERAGE NUMBER OF SETTINGS PER CASE	5
NUMBER OF SETTINGS GROUPED	0-1 28
	2-3 120
	4-5 114
	6-7 68
	8-9 33
OVER 9	22

Event identification and measures of time between events

Prisoner Index (JIMS 518)

DATE RUN 07 02 08

HARRIS COUNTY
JUSTICE INFORMATION AND MANAGEMENT SYSTEM

PAGE 1

COUNTY COURT AT LAW NO. 01
PRISONER INDEX
JIMS REPORT NO. 518

DEPENDANT NAME	SPN	SEX	RACE	DATE-OF-BIRTH	LOC	BK-NUMBER	BK-DATE	DAYS-IN-JAIL
OFFENSE	OFF-CL	DEF-STATUS	CRT	CASE-NUMBER	INS	SET-DATE	CASE-STATUS	DISP DATE-DISP

ADAMS, DANA GERARD	01274295	M	B	01-04-71	4F4	002965622	06-26-08	00006
-**** BOOKED CASE(S): ****-								
BURGLARY OF HABITATION	F2	DEPENDANT	337	1167793-01-01	COM	07-02-08	HAS OPEN SETTINGS	- -
HARASSING COMMUNICATION	MB	DEPENDANT	001	1482716-01-01	MIN	07-16-08	HAS OPEN SETTINGS	- -
ASSAULT-BOD INJ-FAMILY MEMBER	F3	DEPENDANT	337	1104754-01-01	MAJ	07-02-08	HAS OPEN SETTINGS	DADJ 04-25-07
-**** PRIOR CASE(S): ****-								
ISSUE BAD CHECK	MC	DISPOSED	012	BC12C02-53-98	WAR	- -	FINAL DISPOSITION, NO ACTIVITY EXPE	TEMP 02-28-07
ISSUE BAD CHECK	MC	DISPOSED	012	BC12C02-53-97	WAR	- -	FINAL DISPOSITION, NO ACTIVITY EXPE	TEMP 02-28-07
ASSAULT-BOD INJ-FAMILY MEMBER	F3	DEPENDANT	337	1104754-01-01	MAJ	07-02-08	HAS OPEN SETTINGS	DADJ 04-25-07
ASSAULT-BODILY INJURY	MA	DISPOSED	004	1167869-01-01	MIN	06-13-03	DISMISSED	DISM 06-13-03
ISSUE BAD CHECK	MC	DISPOSED	012	JC12002-64-91	WAR	- -	FINAL DISPOSITION, NO ACTIVITY EXPE	PDPC 02-13-97
HARASSING COMMUNICATION	MB	DISPOSED	001	9335535-01-01	MIN	12-08-93	FINAL DISPOSITION, NO ACTIVITY EXPE	DISP 06-08-94
THEFT-\$200-750-CHECK	MA	DISPOSED	001	9312431-01-01	MIN	12-08-93	DISMISSED	DISM 12-08-93
ISSUE BAD CHECK	MC	DISPOSED	021	JC21010-11-16	WAR	- -	FINAL DISPOSITION, NO ACTIVITY EXPE	AUTO 08-10-93

Prisoner Index (JIMS 518)

***** PRISONER INDEX RECAP *****
TOTAL FOR ALL COURTS

TOTAL PRISONERS W/O FELONY PENDING 489

TOTAL PRISONERS W/FELONY PENDING 298

TOTAL PRISONERS 787

AVERAGE CONFINEMENT W/O FELONY PENDING 26

AVERAGE CONFINEMENT W/FELONY PENDING 68

AVERAGE CONFINEMENT ALL PRISONERS 42

Judge's Docket (JIMS 096)

JIMS REPORT NO. 096

FINAL DOCKET
COUNTY CRIMINAL COURT AT LAW NO. 1
07 03 2008

ARRAIGNMENT

1534343 01010 AGURCIA, DARLENA IVETH ACC-WESTMO
7 10 79 WFN TX08193789 281 842 900
STATES ATTORNEY B DWI 1ST OFFENDER BAC .08

DEFENSE ATTORNEY \$500
LANGUAGE SPOKEN: UNSPECIFIED
7 DAYS OLD

6 26 08 DFD

NON-TRIAL 00
PLEA 00
JURY-TRIAL 00
COURT-TRIAL 00
MOTION 00
OTHER SETTING 01
TOTAL 01
D-0 S-0 C-0 T-00

Calendar Summary (081)

JIMS REPORT NO. 081
07/02/08

JUSTICE INFORMATION AND MANAGEMENT SYSTEM
C A L E N D A R S U M M A R Y
COUNTY CRIMINAL COURT AT LAW NO. 1

PAGE 1

DEFENDANT NAME	CASE NO	JF	JPN BOND	BONDSMAN/STATUS	PHONE	DEFENSE ATTORNEY	PHONE TYPE NO	OFFENSE
*****WEDNESDAY 07/02/08*****								
ALANIS, MANUEL ALEJANDRO	1510417	DF	0500	ALANIS, MANUEL ALEJ	-	MOST, RONI MARC	283 6678 DI 7	ASSAULT-FAMILY ME
ALFORD, SHEDRICK DEON	1511871	DF	8000	LYLES, TINA	228-7777	WALKER, MEKISHA	228 2611 DI10	ASSAULT-BODILY IN
ALLEN, JOHN JR.	1529176	DF	5000	LYLES, TINA	228-7777	MCNEELY, MICHAEL ST838	2141 NT 2	EVADE DETENTION
AZOR, JEAN MACUL	1519526	DF	1500	SCHMIDT, DAVID G	222-6222	FEEBLES, PEYTON ZIM	NT 9	THEFT - \$50-\$500
BAKER, ANDREW CHRISTOPHER	1525547	DF	0500	SCHMIDT, DAVID G	222-6222	BROWN, CHERYL SHOOKS26	4249 DI 3	POSS MARIJ 0-2 OZ
BAKER, CHRISTOPHER L.	1456727	DF	2000	IFIC-HAMPTON, RANDY	733-8400	JOHNSON, TE'IVA LAR686	6868 DI10	DWI 1ST OFFENDER
BARRAGON, RAUL	1442950	DF	2000	SCHMIDT, DAVID G	222-6222	JOHNSON, CHARLES D.686	7397 PL17	FAILURE TO STOP &
BARRAGON, RAUL	1493431	DF	7500	SCHMIDT, DAVID G	222-6222		PL10	ASSAULT-FAMILY ME
BYRD, RYAN SCOTT	1493922	DF	1500	IND. LUMBERMEN-PRUE	225-1761	WILLIAMS, FREDERICK970	5556 OT11	INTERFERE DUTIES
BYRD, RYAN SCOTT	1501172	DF	5000	IND. LUMBERMEN-PRUE	225-1761	WILLIAMS, FREDERICK970	5556 OT 9	ASSAULT-FAMILY ME
BYRD, RYAN SCOTT	1501173	DF	5000	IND. LUMBERMEN-PRUE	225-1761	WILLIAMS, FREDERICK970	5556 OT 9	ASSAULT-FAMILY ME

Calendar Summary (JIMS 081)

JIMS REPORT NO. 081
07/02/08

JUSTICE INFORMATION AND MANAGEMENT SYSTEM
D O C K E T S C H E D U L E
RECAP FOR CCCL 1-15

PAGE 1

	ARRG	NTRL	JTRL	CTRL	PLEA	FELP	DISP	SFJS	MDHV	PTCR	OTHR	TOTAL
CCCL - 1	57	115	90	0	28	76	394	3	0	0	36	799
CCCL - 2	152	249	50	0	46	0	156	0	0	119	38	810
CCCL - 3	61	71	36	0	29	70	248	10	0	55	59	639
CCCL - 4	59	237	39	0	59	36	180	60	0	0	44	714
CCCL - 5	60	352	67	1	26	3	95	1	0	0	78	683
CCCL - 6	50	156	50	2	39	76	151	2	0	2	127	655
CCCL - 7	53	162	21	0	33	31	284	0	0	0	37	621
CCCL - 8	49	249	58	2	55	15	109	19	0	38	85	679
CCCL - 9	55	219	22	0	32	0	202	49	0	4	45	628
CCCL - 10	57	238	69	1	37	0	249	0	0	0	63	714
CCCL - 11	53	150	20	0	28	0	120	0	0	200	41	612
CCCL - 12	55	194	26	0	24	40	270	0	0	13	38	660
CCCL - 13	58	331	62	0	52	0	1	10	0	0	187	701
CCCL - 14	60	277	31	0	42	0	0	0	0	0	180	590
CCCL - 15	54	174	16	0	40	0	269	2	1	15	74	645
TOTALS	933	3174	657	6	570	347	2728	156	1	446	1132	10150

Attorney Report (JIMS 123)

JIMS REPORT NO - 123
 RUN DATE - 07/06/2008

JUSTICE MANAGEMENT AND INFORMATION SYSTEM
 ATTORNEY REPORT FOR THE
 COUNTY CRIMINAL COURTS AT LAW FOR CASES DISPOSED
 DURING THE YEAR OF JUN2008

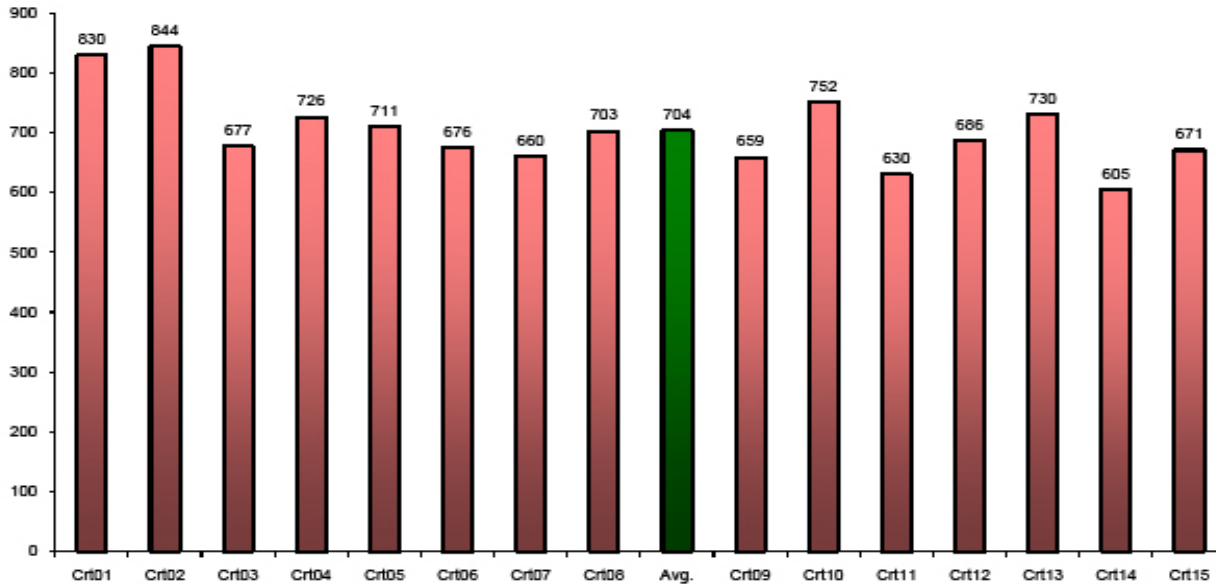
PAGE - 3
 RUN TIME 18.24

DEFENSE ATTORNEY NAME	CRT	CASE-NO	HIRED	D	C	APPOINTED	NUMBER OF	DAYS FROM FIRST	D I S P			
				S	S	ATTY	SETTINGS	APPEARANCE TO	JURY	COURT	PLEA	DISM
				T	T	FEE	TO DISP	FINAL DISP	TRIAL	TRIAL		
SINGER, DAVID	002	149473701010	J	X	C	\$250.00	10	193				X
SINGER, DAVID	002	152032001010	B	X	C	\$50.00	3	54				X
SINGER, DAVID	002	152665501010	B	X	C	\$50.00	2	34				X
SINGER, DAVID	002	152722801010	J	X	C	\$50.00	2	26				X

Original Cases Pending Graphic



Docket Cases Pending
 Tuesday, July 8, 2008
 Total: 10,520

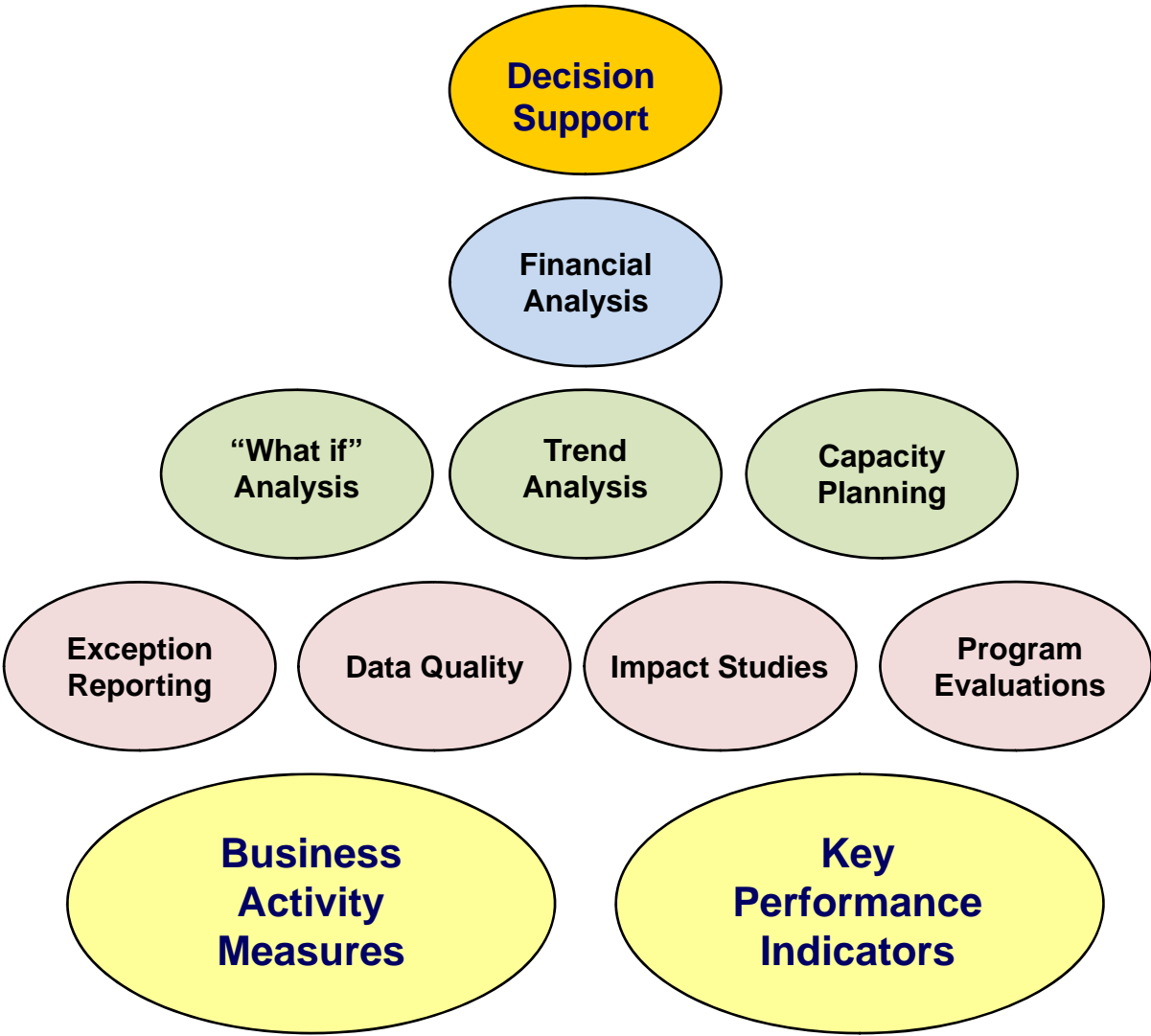


Docket Cases Pending
 Date Created: 7/8/2008

Court	ARRG	NTRL	JTRL	CTRL	PLEA	FELP	DISP	SFJS	MDHV	P1CR	Total	Adj Total
1	59	125	89	0	28	78	411	3	0	0	830	
2	160	266	48	0	46	0	162	0	0	118	844	
3	56	97	36	0	29	73	263	8	0	56	677	
4	56	234	35	0	55	35	185	64	0	0	726	
5	55	309	66	1	24	5	100	1	0	0	711	
6	48	183	51	2	32	73	241	2	0	1	676	
7	42	175	17	0	30	30	300	0	0	0	660	
8	65	267	43	2	47	18	112	10	0	41	703	
9	58	245	22	0	28	0	207	46	0	5	659	
** 10	61	278	68	1	38	0	243	0	0	0	752	712
11	61	157	16	0	26	0	118	0	0	210	630	
12	58	210	24	1	30	36	270	0	0	18	686	
13	72	353	65	0	49	0	1	16	0	0	730	
14	40	293	31	2	39	0	0	0	0	0	605	
15	64	209	17	0	44	0	251	2	1	16	671	
	1,015	3,475	648	9	545	348	2,764	152	1	465	10,560	10,520

** Court 10 adjusted total allows for 40 fugitive cases

Domain Model for Court Business Intelligence



Court Performance Metrics

Business Activity Measures (BAMs)

- Active Cases Pending
- Incoming Cases by Filing Instrument
- Incoming Cases by Offense Category
- New Filings Year to Date
- Disposed Cases by Offense Category
- Activity Summary for Judgments

Court Performance Metrics

Key Performance Indicators (KPIs)

- Age of Caseload
- Clearance Rate
- Time to Disposition
- Settings to Disposition

A Single Version of the Truth



Additional Reading

Competing On Analytics - The New Science of Winning, John Davenport and Jeanne B. Harris, Harvard Business School Press, 2007

Super Crunchers – Why Thinking by the Numbers Is The New Smart Way To Be Smart, Ian Ayres, Bantam, 2007

Key Elements of Effective Courts

Courts that Succeed – Hewitt, Gallas & Mahoney, 1990

- Leadership
- Goals
- Information
- Communications
- Caseflow Management Policies
- Commitment
- Staff Involvement
- Education and Training
- Mechanisms for Accountability
- Backlog Reduction and Inventory Control

Key Elements of Effective Courts

All High Performing Organizations Will Have These Things in Common

Ron Stupak - NACM Mid Year, 1996

- Focused
- Flexible
- Friendly
- Fast
- Fiscally and Financially Responsible
- Fact Anchored
- Future Oriented
- Flat Structured
- First Time Quality

Hallmarks of Courts of the Future

- Develop Leadership
- Use Information
- Create Knowledge
- Manage Change
- Monitor
- Evaluate
- Refine

Court Business Intelligence Screenshots



Search

County Courts Homepage -
> Court Intelligence

About These Reports

Reports

County Criminal Courts

Dockets

Statistics

Active Cases Pending

Age of Caseload

Caseload Trend

Disposed Cases By
Offense Category

Incoming Cases

Incoming Cases
(Trend) by Offense
Category

Incoming Cases By
Instrument Type

Incoming Cases By
Offense Category

New Filings Year to
Date

Court Admin

District Criminal Courts

Research

Staging Info

Meta Data

Record Counts

Query Case Dimension

Model 204 Tables/Record
Types

Task Response System

Olap Browser

Dimensions

Division

100%

Select a format

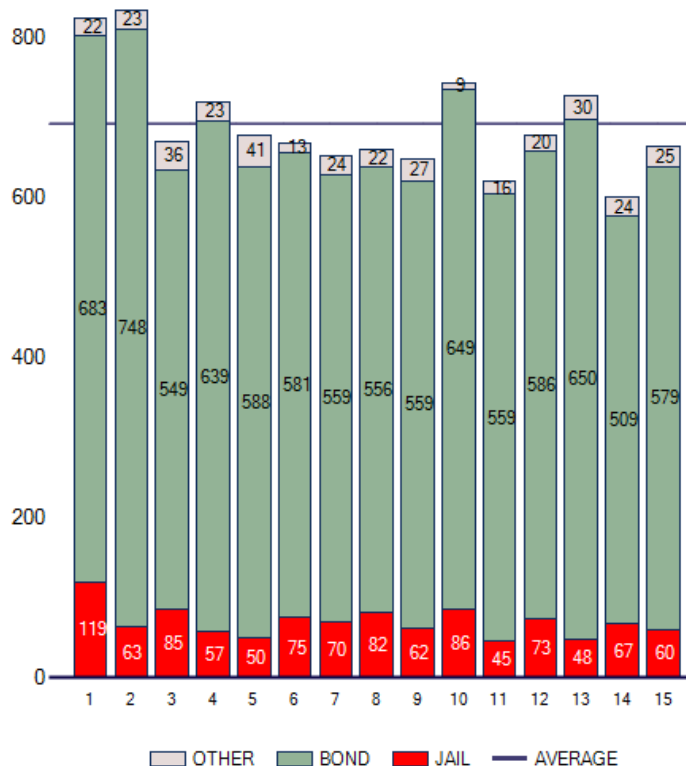
Export



Active Cases Pending

for the Harris County Criminal Courts at the Start of Business on Tuesday, July 08, 2008

Court	Cases
1	824
2	834
3	670
4	719
5	679
6	669
7	653
8	660
9	648
10	744*
11	620
12	679
13	728
14	600
15	664
Total	10,391
Average	693



*Court 10 has 37 fugitive cases pending.



Search

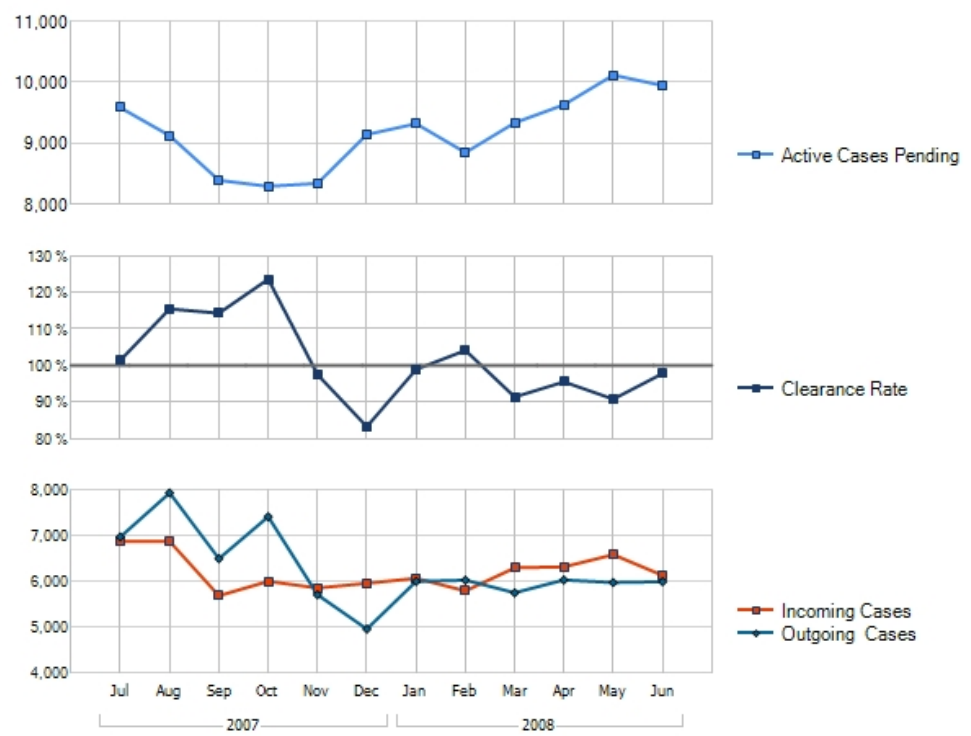
County Courts Homepage -
 > Court Intelligence
[About These Reports](#)

- Reports
 - County Criminal Courts
 - Dockets
 - Statistics
 - Active Cases Pending
 - Age of Caseload
 - Caseload Trend**
 - Disposed Cases By Offense Category
 - Incoming Cases
 - Incoming Cases (Trend) by Offense Category
 - Incoming Cases By Instrument Type
 - Incoming Cases By Offense Category
 - New Filings Year to Date
 - Court Admin
 - District Criminal Courts
 - Research
 - Staging Info
 - Meta Data
 - Record Counts
 - Query Case Dimension
 - Model 204 Tables/Record Types
 - Task Response System
 - Olap Browser
 - Dimensions

100% Select a format Export

Caseload Trend

Harris County Criminal Courts from July, 2007 through June, 2008



Year	Month	Cases Pending	Incoming	Outgoing	Clearance Rate
2008					
	June	9,939	6,137	5,999	98 %
	May	10,111	6,590	5,981	91 %
	April	9,625	6,324	6,038	95 %
	March	9,329	6,302	5,757	91 %
	February	8,841	5,797	6,033	104 %
	January	9,314	6,074	6,006	99 %



Search

[County Courts Homepage -](#)

[> Court Intelligence](#)

[About These Reports](#)

Reports

County Criminal Courts

Dockets

Statistics

- Active Cases Pending
- Age of Caseload
- Caseload Trend
- Disposed Cases By Offense Category
- Incoming Cases
- Incoming Cases (Trend) by Offense Category
- Incoming Cases By Instrument Type
- Incoming Cases By Offense Category
- New Filings Year to Date

Court Admin

District Criminal Courts

Research

- Staging Info
- Meta Data
- Record Counts
- Query Case Dimension
- Model 204 Tables/Record Types
- Task Response System
- Olap Browser
- Dimensions

Court

[View Report](#)

100%

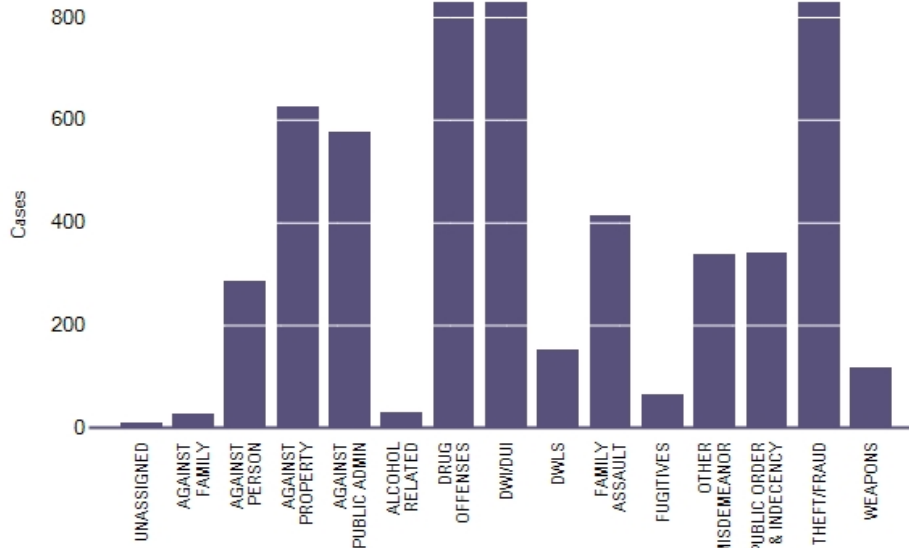
Select a format

Export



Incoming Cases By Offense Category

for Cases Disposed in the Harris County Criminal Courts in June, 2008



Offense Category Incoming Cases

<input type="checkbox"/> UNASSIGNED	16
<input type="checkbox"/> AGAINST FAMILY	33
<input type="checkbox"/> AGAINST PERSON	295
<input type="checkbox"/> AGAINST PROPERTY	660
<input type="checkbox"/> AGAINST PUBLIC ADMIN	596
<input type="checkbox"/> ALCOHOL RELATED	36
<input type="checkbox"/> DRUG OFFENSES	1066
<input type="checkbox"/> DWI/DUI	892
<input type="checkbox"/> DWLS	157
<input type="checkbox"/> FAMILY ASSAULT	494
<input type="checkbox"/> FUGITIVES	48



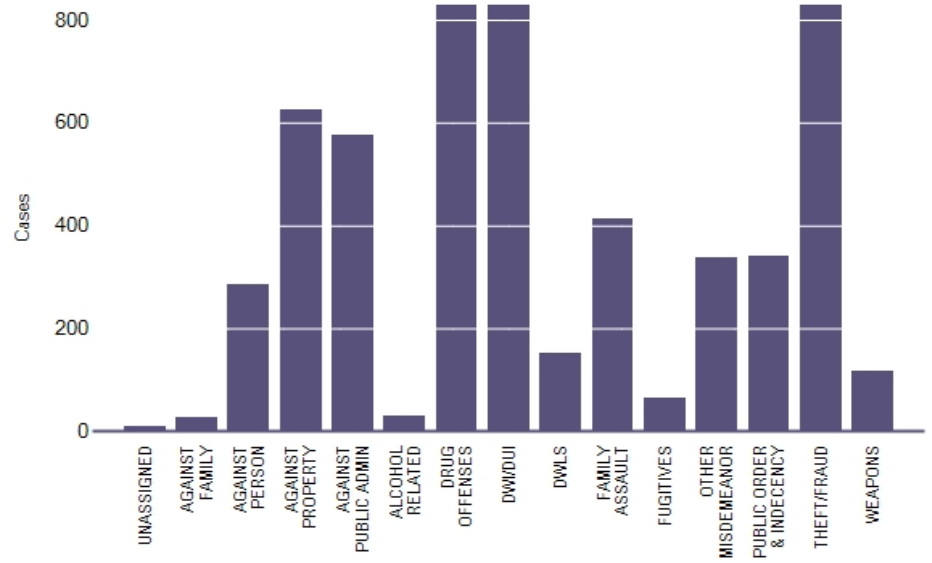
County Courts Homepage -
> Court Intelligence
About These Reports

- [-] Reports
 - [-] County Criminal Courts
 - [-] Dockets
 - [-] Statistics
 - Active Cases Pending
 - Age of Caseload
 - Caseload Trend
 - [Disposed Cases By Offense Category](#)
 - Incoming Cases
 - Incoming Cases (Trend) by Offense Category
 - Incoming Cases By Instrument Type
 - Incoming Cases By Offense Category
 - New Filings Year to Date
 - [-] Court Admin
 - [-] District Criminal Courts
- [-] Research
 - Staging Info
 - Meta Data
 - Record Counts
 - Query Case Dimension
 - Model 204 Tables/Record Types
 - Task Response System
 - Olap Browser
 - [-] Dimensions

Court

Disposed Cases By Offense Category

for Cases Disposed in the Harris County Criminal Courts in June, 2008



Offense Category Outgoing Cases

[-] UNASSIGNED	9
[-] AGAINST FAMILY	28
[-] AGAINST PERSON	286
[-] AGAINST PROPERTY	624
[-] AGAINST PUBLIC ADMIN	575
[-] ALCOHOL RELATED	30
[-] DRUG OFFENSES	1121
[-] DWI/DUI	891
[-] DWLS	153
[-] FAMILY ASSAULT	413
[-] FUGITIVES	64



Search

County Courts Homepage - > Court Intelligence

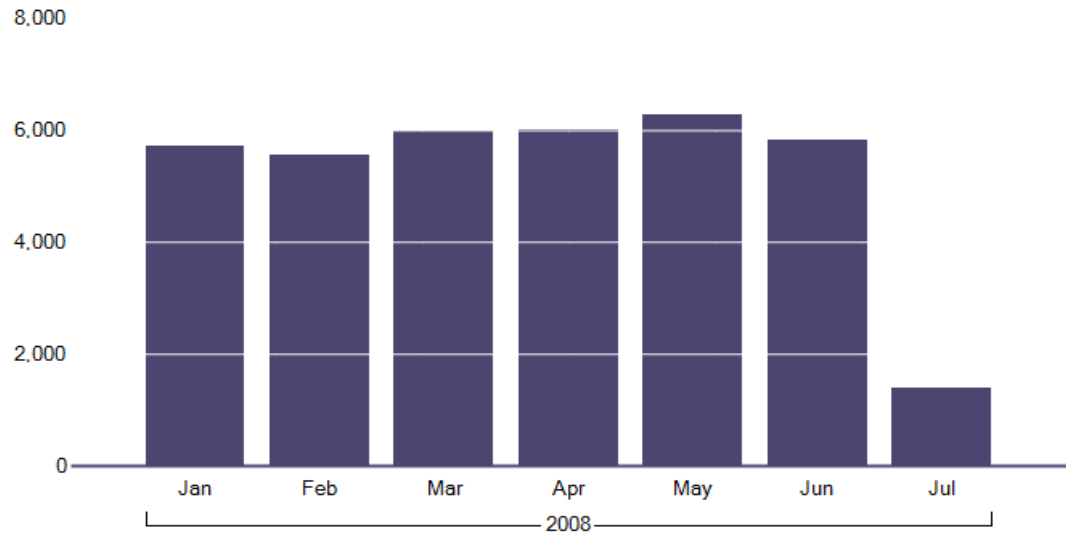
About These Reports

- [-] Reports
 - [-] County Criminal Courts
 - [+] Dockets
 - [-] Statistics
 - Active Cases Pending
 - Age of Caseload
 - Caseload Trend
 - Disposed Cases By Offense Category
 - Incoming Cases
 - Incoming Cases (Trend) by Offense Category
 - Incoming Cases By Instrument Type
 - Incoming Cases By Offense Category
 - [New Filings Year to Date](#)
 - [+] Court Admin
 - [+] District Criminal Courts
- [-] Research
 - Staging Info
 - Meta Data
 - Record Counts
 - Query Case Dimension
 - Model 204 Tables/Record Types
 - Task Response System
 - Olap Browser
 - [+] Dimensions

Year Number

New Filings Year to Date

Harris County Criminal Courts for 2008



	2008							Total
	Jan	Feb	Mar	Apr	May	Jun	Jul	
AGAINST FAMILY	30	16	28	31	26	28	6	165
AGAINST PERSON	230	239	262	315	268	280	72	1,666
AGAINST PROPERTY	577	519	628	741	702	647	174	3,988
AGAINST PUBLIC ADMIN	489	473	499	544	546	587	99	3,237
ALCOHOL RELATED	27	22	28	41	17	35	7	177
DRUG OFFENSES	1,103	1,080	1,248	1,213	1,164	972	213	6,993
DWI/DUI	853	904	903	821	872	835	262	5,450
DWLS	157	159	165	151	186	156	28	1,002
FAMILY ASSAULT	409	399	424	417	472	452	127	2,700
FUGITIVES	80	56	74	71	71	48	15	415
OTHER MISDEMEANOR	292	332	342	346	347	365	67	2,091



Search

County Courts Homepage - > Court Intelligence

About These Reports

- Reports
 - County Criminal Courts
 - Dockets
 - Statistics
 - Active Cases Pending
 - Age of Caseload
 - Caseload Trend
 - Disposed Cases By Offense Category
 - Incoming Cases
 - Incoming Cases (Trend) by Offense Category
 - Incoming Cases By Instrument Type
 - Incoming Cases By Offense Category
 - New Filings Year to Date
 - Court Admin
 - Active Cases Pending
 - Active Cases With No Future Setting
 - Activity Summary For Judgments
 - Age of Caseload
 - Age of Caseload by Defendant Status and Counsel Type
 - Case Summary with Activity
 - Cases Set Out More Than a Year
 - CCL Master Caseload Explorer
 - Clearance Rate
 - Clearance Rate Distribution
 - Court Dashboard
 - Court Manager Dashboard
 - HCDCA Master Caseload Explorer

Court Division

Court

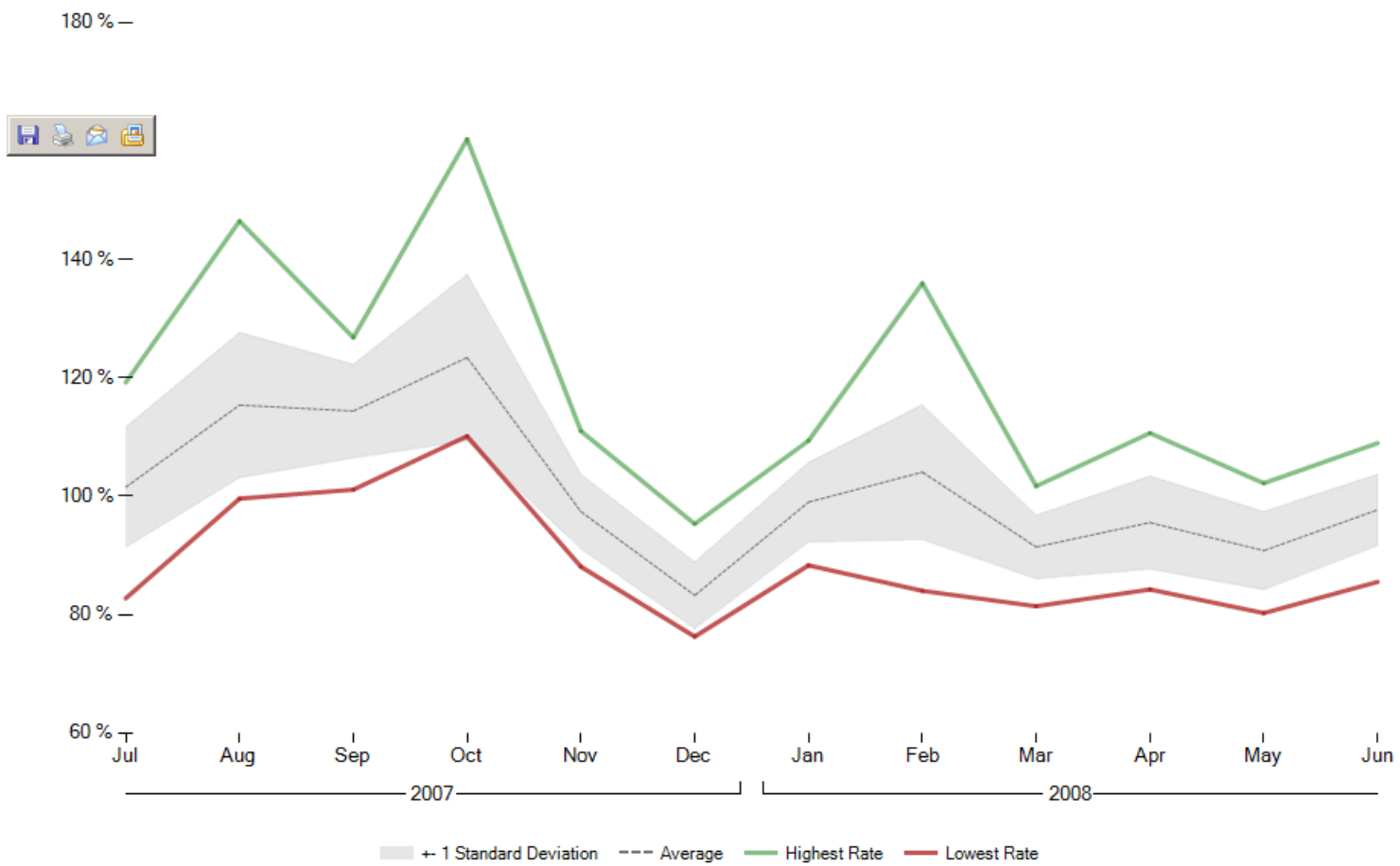
100%

Select a format

Export

Clearance Rate Distribution

for Cases Disposed in the Harris County Criminal Courts from January, 2007 through June, 2008





[County Courts Homepage](#) -

> [Court Intelligence](#)

[About These Reports](#)

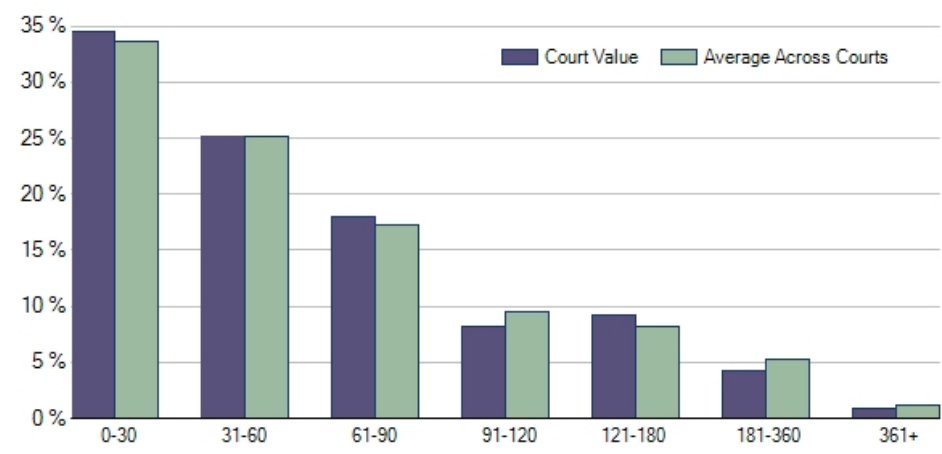
- ▣ Reports
 - ▣ County Criminal Courts
 - ⊕ Dockets
 - ▣ Statistics
 - Active Cases Pending
 - [Age of Caseload](#)
 - Caseload Trend
 - Disposed Cases By Offense Category
 - Incoming Cases
 - Incoming Cases (Trend) by Offense Category
 - Incoming Cases By Instrument Type
 - Incoming Cases By Offense Category
 - New Filings Year to Date

- ⊕ Court Admin
- ⊕ District Criminal Courts
- ▣ Research
 - Staging Info
 - Meta Data
 - Record Counts
 - Query Case Dimension
 - Model 204 Tables/Record Types
 - Task Response System
 - Olap Browser
 - ⊕ Dimensions

Court

Age Of Caseload For Court 015

for the Harris County Criminal Courts at the Start of Business on Tuesday, July 08, 2008



0 To 30	229 (34 %)
31 To 60	167 (25 %)
61 To 90	119 (18 %)
91 To 120	54 (8 %)
121 To 180	61 (9 %)
181 To 360	28 (4 %)
361+	6 (1 %)
Total Active Cases	664



Search

County Courts Homepage -

> Court Intelligence

About These Reports

Reports

County Criminal Courts

Dockets

Statistics

- Active Cases Pending
- Age of Caseload
- Caseload Trend
- Disposed Cases By Offense Category
- Incoming Cases
- Incoming Cases (Trend) by Offense Category
- Incoming Cases By Instrument Type
- Incoming Cases By Offense Category
- New Filings Year to Date

Court Admin

- Active Cases Pending
- Active Cases With No Future Setting
- Activity Summary For Judgments
- Age of Caseload
- [Age of Caseload by Defendant Status and Counsel Type](#)
- Case Summary with Activity
- Cases Set Out More Than a Year
- CCL Master Caseload Explorer
- Clearance Rate
- Clearance Rate Distribution
- Court Dashboard
- Court Manager Dashboard
- HCDCA Master Caseload Explorer
- Inactive Cases With Jail Status

Court Division

Court

100%

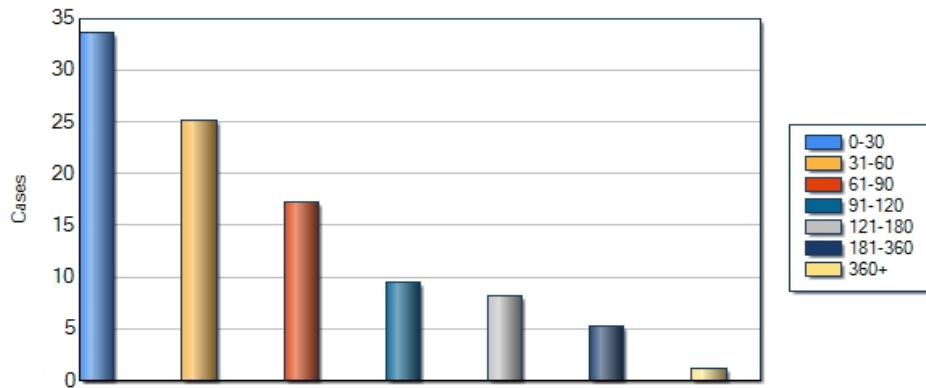
Select a format

Export



Age Of Caseload

for the Harris County Criminal Courts at the Start of Business on Tuesday, July 08, 2008



Defendant Status	ALL	BOND	JAIL	OTHER	
Counsel Type	ALL	APPOINTED ATTORNEY	HIRED ATTORNEY	OTHER/UNKNOWN	UNKNOWN

Age of Case	Case Count
0 To 30	3,498 (34 %)
31 To 60	2,611 (25 %)
61 To 90	1,787 (17 %)
91 To 120	982 (9 %)
121 To 180	851 (8 %)
181 To 360	546 (5 %)
361+	116 (1 %)
Total Active Cases	10,391



Search

[County Courts Homepage](#) -

> [Court Intelligence](#)

[About These Reports](#)

Reports

County Criminal Courts

Dockets

Statistics

- Active Cases Pending
- Age of Caseload
- Caseload Trend
- Disposed Cases By Offense Category
- Incoming Cases
- Incoming Cases (Trend) by Offense Category
- Incoming Cases By Instrument Type
- Incoming Cases By Offense Category
- New Filings Year to Date

Court Admin

- Active Cases Pending
- Active Cases With No Future Setting
- Activity Summary For Judgments
- Age of Caseload
- Age of Caseload by Defendant Status and Counsel Type
- Case Summary with Activity
- Cases Set Out More Than a Year
- CCL Master Caseload Explorer
- Clearance Rate
- Clearance Rate Distribution
- Court Dashboard
- Court Manager Dashboard
- HCDCA Master Caseload Explorer

Court Division

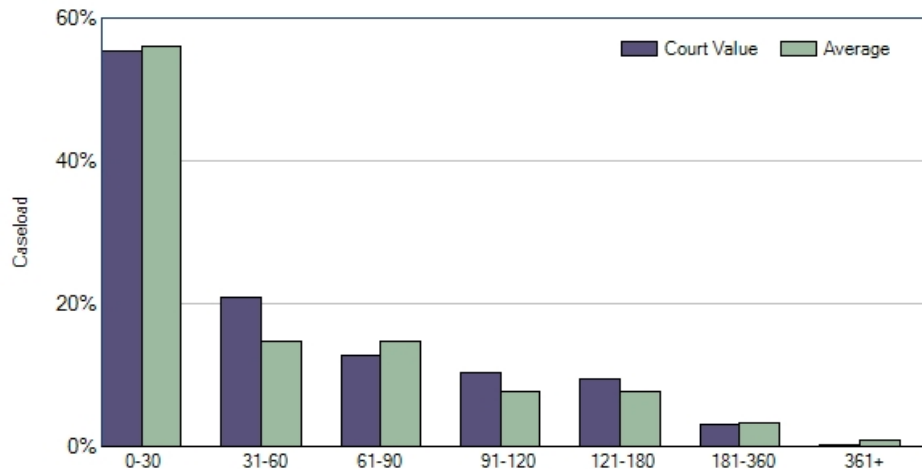
Court

Export



Time To Disposition For Court 007

for Cases Disposed in the Harris County Criminal Courts for June, 2008



*Time to Disposition is measured from the File Date of the case. As a result of the Direct Filing Order, File Date and Arrest Date are almost always the same.

0 To 30	232 (50 %)
31 To 60	87 (19 %)
61 To 90	53 (11 %)
91 To 120	43 (9 %)
121 To 180	39 (8 %)
181 To 360	13 (3 %)
361 +	1 (0 %)
Total Cases Disposed	468



Search

County Courts Homepage -

> Court Intelligence

About These Reports

- ▣ Reports
 - ▣ County Criminal Courts
 - ▣ Dockets
 - ▣ Statistics
 - Active Cases Pending
 - Age of Caseload
 - Caseload Trend
 - Disposed Cases By Offense Category
 - Incoming Cases
 - Incoming Cases (Trend) by Offense Category
 - Incoming Cases by Instrument Type
 - Incoming Cases By Offense Category
 - New Filings Year to Date
 - ▣ Court Admin
 - Active Cases Pending
 - Active Cases With No Future Setting
 - Activity Summary For Judgments
 - Age of Caseload
 - Age of Caseload by Defendant Status and Counsel Type
 - Case Summary with Activity
 - Cases Set Out More Than a Year
 - CCL Master Caseload Explorer
 - Clearance Rate
 - Clearance Rate Distribution
 - Court Dashboard

Court Division

100%

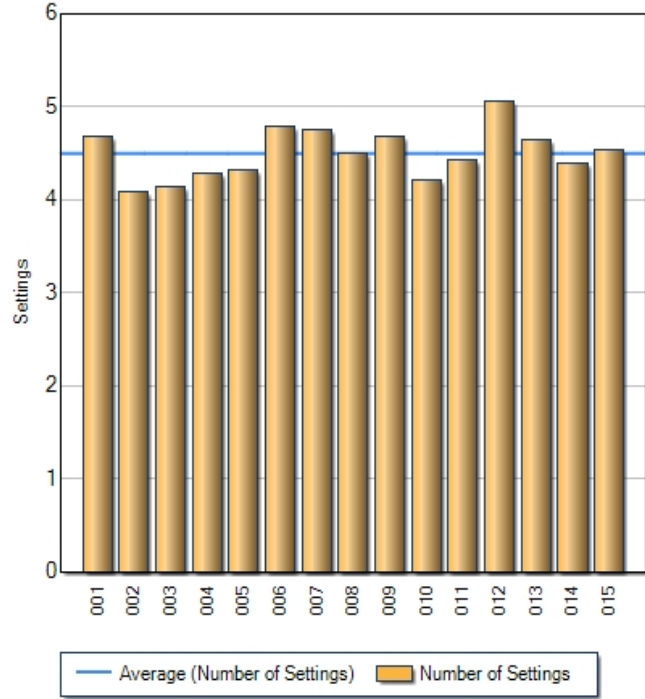
Select a format

Export

Settings To Disposition

for Cases Disposed in the Harris County Criminal Courts in June, 2008

Court	Settings
001	4.7
002	4.1
003	4.1
004	4.3
005	4.3
006	4.8
007	4.8
008	4.5
009	4.7
010	4.2
011	4.4
012	5.1
013	4.6
014	4.4
015	4.5
Total Settings	26,982
Outgoing Cases	5,999
Average	4.5





Search

County Courts Homepage -

> Court Intelligence

About These Reports

Reports

County Criminal Courts

Court Admin

- Active Cases Pending
- Active Cases With No Future Setting
- Activity Summary For Judgments
- Age of Caseload
- Age of Caseload by Defendant Status and Counsel Type
- Case Summary with Activity
- Cases Set for Jury Trial
- Cases Set Out More Than a Year
- CCL Master Caseload Explorer
- Clearance Rate
- Clearance Rate Distribution
- Court Dashboard
- Court Manager Dashboard
- HCDCA Master Caseload Explorer
- Inactive Cases With Jail Status
- [Pending Jury Trials By Court](#)

Report Execution

- Settings To Disposition
- Time to Disposition

District Criminal Courts

Research

- Staging Info
- Meta Data
- Record Counts
- Query Case Dimension
- Model 204 Tables/Record Types
- Task Response System

Court Division

View Report

100%

Select a format

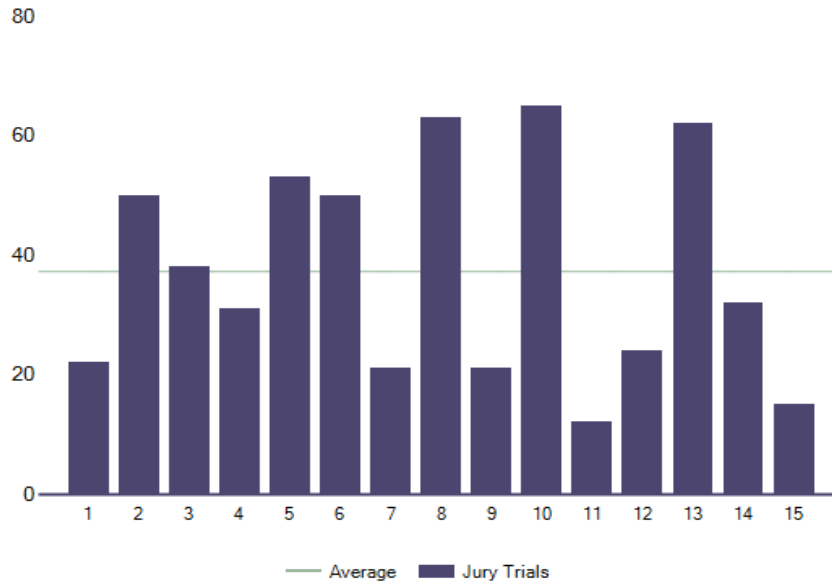
Export



Pending Jury Trials By Court

in the Harris County Criminal Courts at the Start of Business on Thursday, July 10, 2008

Court	Jury Trials
1	22
2	50
3	38
4	31
5	53
6	50
7	21
8	63
9	21
10	65
11	12
12	24
13	62
14	32
15	15
Total	559
Average	37





[County Courts Homepage](#) -
> [Court Intelligence](#)
[About These Reports](#)

- ▣ Reports
 - ▣ County Criminal Courts
 - ▣ Dockets
 - ▣ Statistics
 - Active Cases Pending
 - Age of Caseload
 - Caseload Trend
 - Disposed Cases By Offense Category
 - Incoming Cases
 - Incoming Cases (Trend) by Offense Category
 - Incoming Cases By Instrument Type
 - Incoming Cases By Offense Category
 - New Filings Year to Date

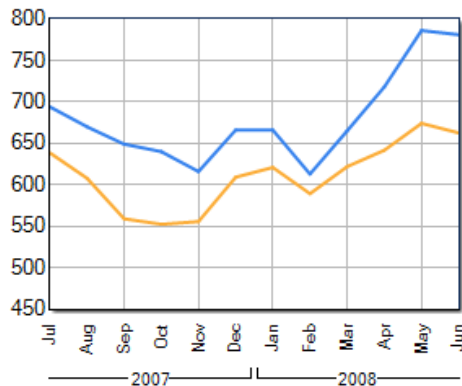
- ▣ [Court Admin](#)
 - Active Cases Pending
 - Active Cases With No Future Setting
 - Activity Summary For Judgments
 - Age of Caseload
 - Age of Caseload by Defendant Status and Counsel Type
 - Case Summary with Activity
 - Cases Set Out More Than a Year
 - CCL Master Caseload Explorer
 - Clearance Rate
 - Clearance Rate Distribution
 - [Court Dashboard](#)
 - Court Manager Dashboard

Court Division Code Court Abbreviation

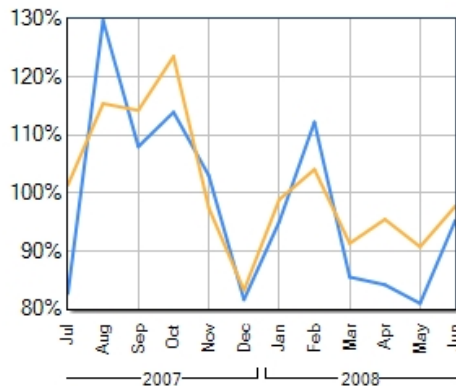
Court Dashboard For Court 001

for the Harris County Criminal Courts at the Start of Business on Tuesday, July 08, 2008

Active Cases Pending (Trend)

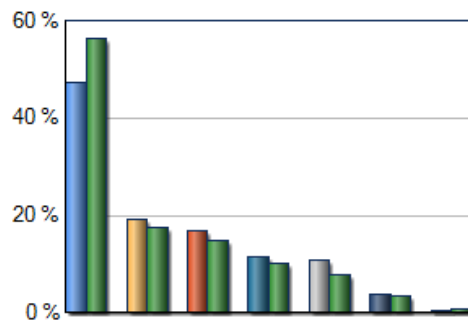


Clearance Rate (Trend)



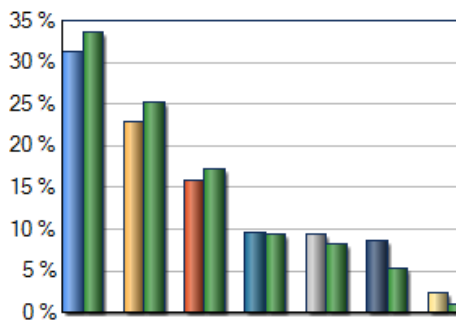
Time to Disposition

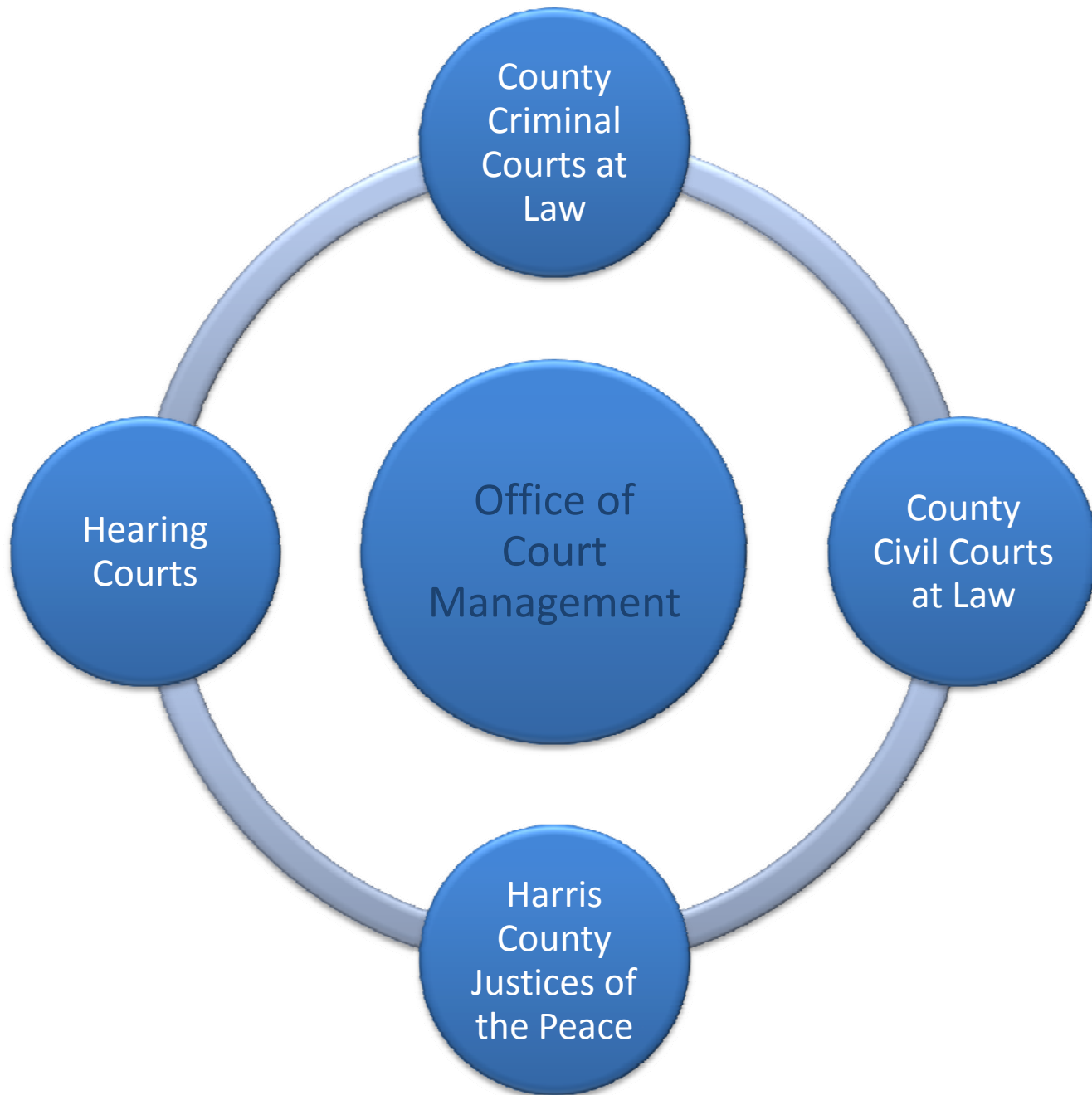
For Cases Disposed in June 2008



Age of Caseload

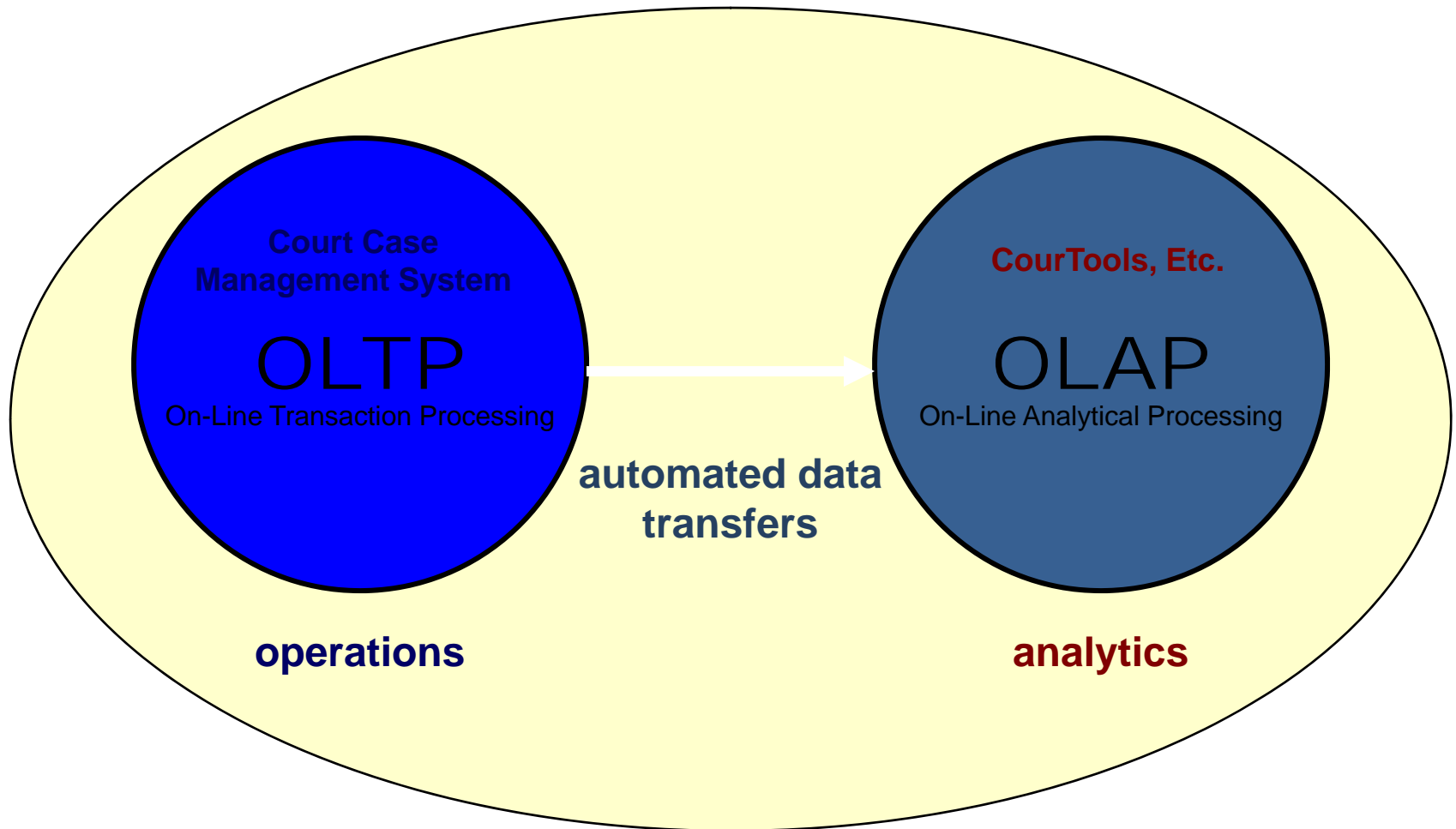
For July 08, 2008



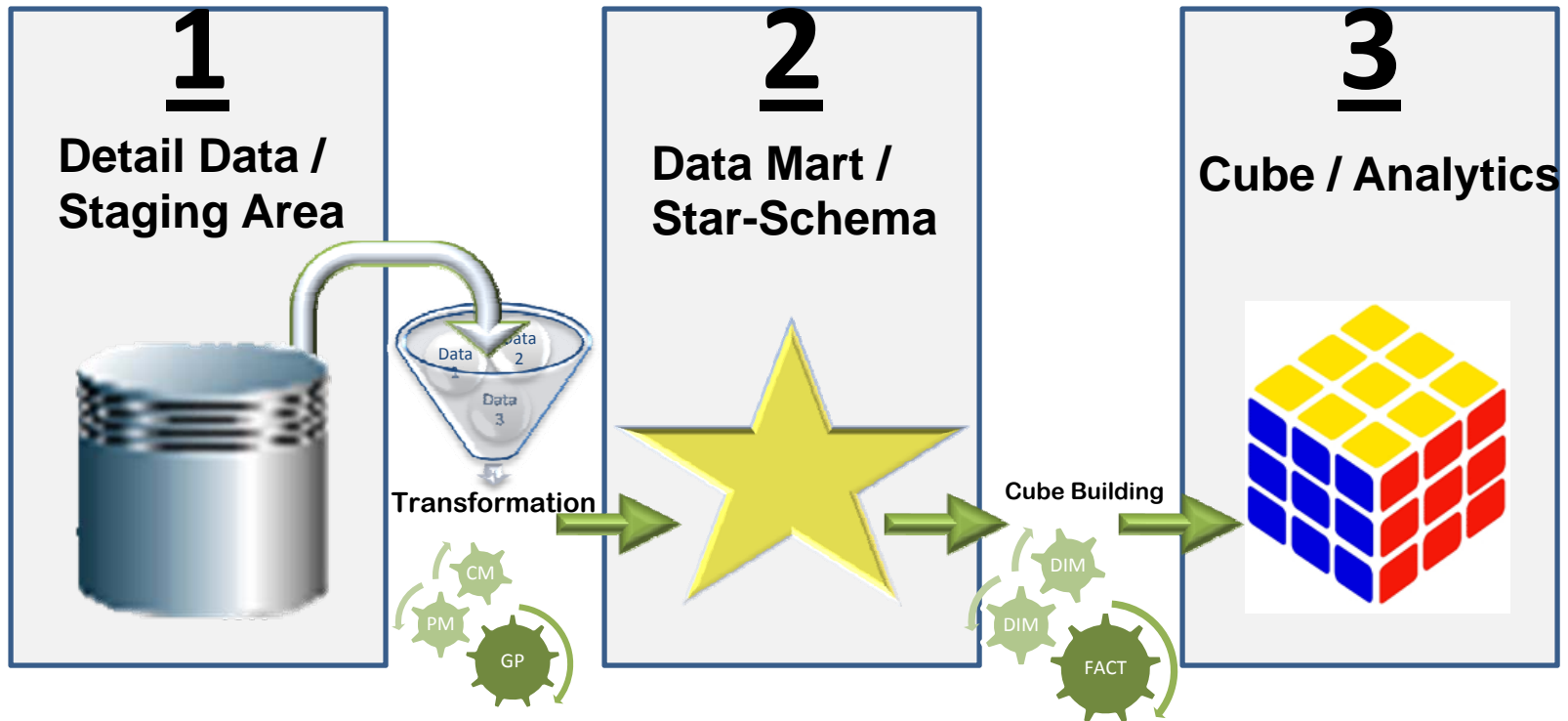


Court Business Intelligence System Technical Information

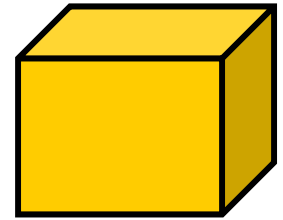
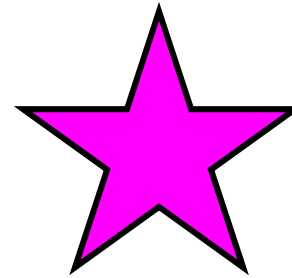
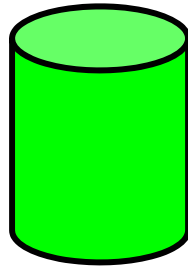
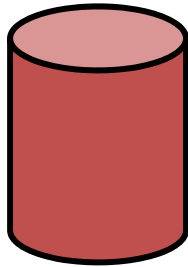
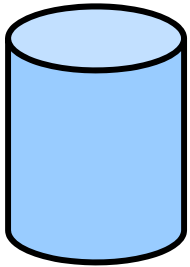
System Model for Court Business Intelligence



Data Availability



Data Acquisition



System Overview

TECHNOLOGY
 SQL Server 2005
 Reporting Services
 Analysis Services
 Web Portal (written in .Net)

